

SIDING

Tongue & Groove



C L O S E D - J O I N T S Y S T E M

 **LONGBOARD®**
INSPIRING FACADES

Distributed by:

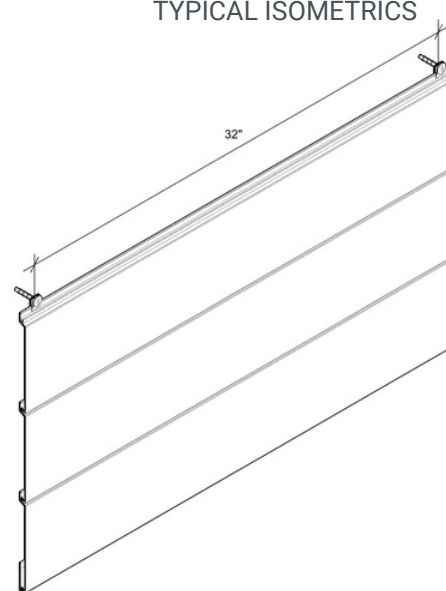
 **Facade**
Specialties, Inc.

p: 1-866-716-2436
e: info@facadespec.com
w: facadespecialtiesinc.com

TONGUE & GROOVE SIDING



TYPICAL ISOMETRICS



TYPICAL SECTIONS



PROFILES

V-Groove: 4", 6"
Smooth: 6"
Channel: 6"
Standard Lengths: 24'
96 SQ FT/box

COMPONENTS - STANDARD LENGTHS: 12'

TRADITIONAL: STARTER, 2" CORNER SET, 1-3/8" TWO
PIECE J-TRACK, 1-3/8" TERMINATION SET,
COMPRESSION JOINT (24"), 1-1/2" FLAT REVEAL SET, 1-
1/2" U-REVEAL SET, 1-1/2" T&G U-REVEAL

CRAFTSMAN: 3/4" INSIDE CORNER, 1" OUTSIDE
CORNER, 3/4" U-REVEAL SET, 3/4" T&G U-REVEAL

PRECISION: 5/8" STARTER J-TRACK, 3/16" OUTSIDE
CORNER, 5/8" J-TRACK, 5/8" TWO PIECE J-TRACK, 5/8"
TERMINATION SET, 1/2" FLAT REVEAL, 1/2" T&G FLAT
REVEAL

FINISHES

Woodgrains, Solid, Specialty
Custom Solid Colour Matching (Additional Lead Times Apply)

ATTACHMENT

Planks: Quick-Screen Clips w. #8 screws* @ 32" o.c. (standard)
Quick-Screen Clips included:
135 pcs/4" box
90 pcs/6" box
Trims: hard fasten w. #8 screws* @ 24" o.c.
*screws are NOT included

BIM & CAD

RVT & DWG files available, see website for details

LEAD TIME

3-4 weeks (subject to change)

PHYSICAL DATA

6063-T5 Extruded Aluminum
100% Recyclable
Warranty: Finish: 15 year (standard)/20 year* (ultra)
(*10 week lead time); Aluminum: 50 year
Weight: approx. 1.5lbs/sq. ft.

TESTING

ICC-ES Evaluation Report - Division: 07 00 00 Thermal and
Moisture Protection Section: 07 46 00 - Siding


AAMA 509 Rainscreen: W1, V2

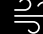
LARR - Los Angeles Department of Building Safety (LADBS)
accepts ICC-ES reports as proof of compliance

Florida Product Code: FL20075

WUI (The Wildland-Urban Interface) - California Department of
Forestry & Fire Protection Office of the State Fire Marshal
Listing No. 8140-2286:0500

 Fire Rating: Class A Non-Combustible by ASTM E136 &
ASTM E84; A2-s1,d0 by EN 13501-1

 Light Reflectance: 5% (Black) up to 73.2% (Ultra White)

 Wind load: Up to 100 psf (4788 Pa)

info@longboardproducts.com
longboardproducts.com

1 (800) 604-0343



LONGBOARD®
INSPIRING FACADES

TONGUE & GROOVE SIDING

INSTALLATION GUIDELINES



1.0. GENERAL

1.1. Product Description

Longboard® Tongue & Groove Siding is an extruded aluminum closed joint rainscreen siding system, designed to be installed horizontally or vertically. Planks are available in standard lengths of 24' (7.3m) and widths/profiles of 4" V-Groove, 6" V-Groove and 6" Channel. Components are 12' (3.7m) lengths, used for end captures such as along the bottom and top of walls, around windows and doors, corners, end terminations and expansion joints for larger wall areas. Longboard T&G Siding can be installed directly outboard of the building envelope, or attached to metal or wood furring strips.

1.2. Installation Considerations

Depth of system (measured from substrate to finished face):

Components = 9/16" (15mm) **this is the total depth of the system*

Planks = 1/2" (12mm)

Radiused walls: 15' (4.6m) minimum radius (contact Longboard for tighter radii details).

Longboard Products are not recommended for use on marine applications in direct contact with salt water.

Longboard Siding is to be installed outboard of a weather resistive barrier, including all flashings, following code and building requirements.

1.3. Cutting

 Always be sure to wear appropriate PPE: eye & hearing protection.

Use standard wood-cutting tools such as a Table Saw & Miter Saw with a carbide blade (60-80 tooth) for non-ferrous metals (aluminum), Jig Saw, Hole-Saw & drill for attachments.

Cut planks to terminate to the midpoint coverage area of components, to allow for expansion & contraction (see 1.4.1.). Trim the taped/drilled ends of all stock length material by 1/2" (12mm) each end and discard (see 1.5.).


1.4. Fastening

Components should be hard-fastened* every 16" (406mm) O.C. directly through the flange.

**#8 pan-head self-drilling screws (not included) are recommended*

Planks & Starter components are secured using Longboard Quick-Screen Clips (included for standard 32" (813mm) O.C.) fastened to the substrate with screws*.

**#8 pan-head screws (not included) are recommended*

 All fasteners should be suitable for exterior use and be compatible with the substrate type.

See Table 1 to adjust fastener spacings of Planks, to meet specific wind-loads.
See Table 2 for fastener spacing and location of Starter.

Quick-Screen Clip Spacing - Wind-Load

Table 1: Maximum Tributary Area and Clip Spacing for Longboard Quick-Screen Clip

Maximum Factored Wind Load ¹ (psf)	4 in. Wide Planks			6 in. Wide Planks		
	Maximum Tributary Area of Clips (in ²)	Maximum Horizontal Spacing (in)	Maximum Vertical Spacing ^{2,3} (in)	Maximum Tributary Area of Clips (in ²)	Maximum Horizontal Spacing (in)	Maximum Vertical Spacing ^{2,3} (in)
Sheathed Wood-Frame Wall w/ 1.5 in. lg. #8 pan head wood screws						
+/- 20	245	61	4	313	52	6
+/- 30	214	53	4	274	46	6
+/- 40	194	49	4	222	37	6
+/- 50	179	45	4	179	30	6
+/- 60	149	37	4	149	25	6
+/- 70	128	32	4	128	21	6
Sheathed Wood-Frame Wall w/ 2.0 in. lg. #8 pan head wood screws						
+/- 20	245	61	4	313	52	6
+/- 30	214	53	4	274	46	6
+/- 40	194	49	4	246	41	6
+/- 50	180	45	4	197	33	6
+/- 60	164	41	4	164	27	6
+/- 70	141	35	4	141	23	6

Table 1 Cont'd: Maximum Tributary Area and Clip Spacing for Longboard Quick-Screen Clip

Maximum Factored Wind Load ¹ (psf)	4 in. Wide Planks			6 in. Wide Planks		
	Maximum Tributary Area of Clips (in ²)	Maximum Horizontal Spacing (in)	Maximum Vertical Spacing ^{2,3} (in)	Maximum Tributary Area of Clips (in ²)	Maximum Horizontal Spacing (in)	Maximum Vertical Spacing ^{2,3} (in)
Sheathed 18ga. 33ksi Steel Stud Wall w/ #8 Pan Head Self-Drilling Screws						
+/- 20	245	61	4	314	52	6
+/- 30	214	53	4	220	37	6
+/- 40	165	41	4	165	27	6
+/- 50	132	33	4	132	22	6
+/- 60	110	27	4	110	18	6
+/- 70	94	24	4	94	16	6
Sheathed 16ga. 50ksi Steel Stud Wall w/ #8 Pan Head Self-Drilling Screws						
+/- 20	245	61	4	313	52	6
+/- 30	214	53	4	274	46	6
+/- 40	194	49	4	217	36	6
+/- 50	174	44	4	174	29	6
+/- 60	145	36	4	145	24	6
+/- 70	124	31	4	124	21	6

¹ - Wind loads are three second gust basic wind speed based, and assume all height, directionally, exposure, topographic, pressure and gust effect coefficients have been applied.

² - Spacing is from clip center to center

³ - Maximum vertical spacing limited by siding vertical dimension

⁴ - An unfactored dead load of 1.5 psf was assumed for the cladding.

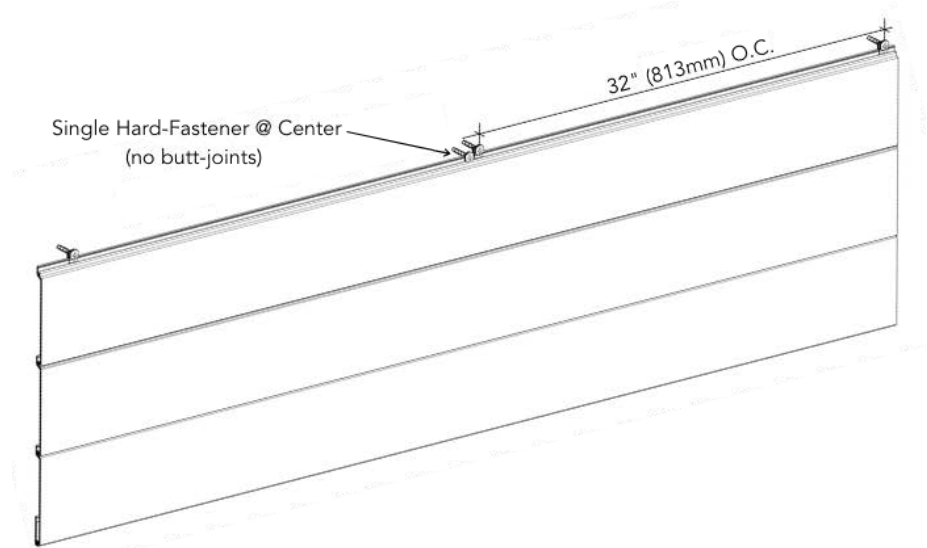
⁵ - If fastening to every second stud, the attachment stud shall be staggered between adjacent runs of siding.

⁶ - The Starter Strip shall be fastened at 16 in. o.c. with #8 self-drilling screws into 18 ga. 33 ksi steel studs or 1.5 in. long #8 wood screws into wood studs (min. S-P-F grade). The Starter Strip shall be fastened at 32 in. o.c. with #8 self-drilling screws into 16 ga. 50 ksi steel studs or 2.0 in. long #8 wood screws into wood studs (min. S-P-F grade).

Table 2: Fastening Requirements Longboard Starter

Backing Wall/ Fastener	Maximum Factored Wind Load ¹ (psf)	Siding Width (in)	Maximum Horizontal Screw Spacing (in)	Screw Location In Strip	Siding Width (in)	Maximum Horizontal Screw Spacing (in)	Screw Location In Strip
Wood Stud w/ #8 - 1.5in lg. screws	+/- 20	4	16	End	6	16	End
	+/- 30		16	End		16	End
	+/- 40		16	End		16	Middle
	+/- 50		16	End		16	Middle
	+/- 60		16	Middle		16	Middle
	+/- 70		16	Middle		16	Middle
Wood Stud w/ #8 - 2.0in lg. screws	+/- 20	4	32	End	6	32	End
	+/- 30		32	End		16	End
	+/- 40		32	End		16	End
	+/- 50		16	End		16	Middle
	+/- 60		16	End		16	Middle
	+/- 70		16	End		16	Middle
18ga 33ksi steel studs w/ #8 screws	+/- 20	4	16	End	6	16	End
	+/- 30		16	End		16	Middle
	+/- 40		16	Middle		16	Middle
	+/- 50		16	Middle		16	Middle
	+/- 60		16	Middle		16	Middle
	+/- 70		16	Middle		16	Middle
16ga 50ksi steel studs w/ #8 screws	+/- 20	4	32	End	6	32	End
	+/- 30		32	End		16	End
	+/- 40		16	End		16	End
	+/- 50		16	End		16	Middle
	+/- 60		16	End		16	Middle
	+/- 70		16	End		16	Middle

Quick-Screen Clips allow for free movement of the planks, to expand & contract during thermal changes (see 1.4.1.).



TIP! It is good practice to hard-fasten each plank directly through the flange, near the center of each length to keep the planks from migrating.

⚠ Where installing staggered butt-joints, hard-fasten the two planks at the butt-joint to ensure joints do not open up (see Detail A & B). Fasteners should be anchored into a solid secure framing member, blocking, furring strip or backer plate* etc. (*see Detail B). Use touch-up paint pens (purchased separately) to finish the ends of the two (2) planks at the butt-joint.

When using the Precision Outside Corner, miter the end of the Planks to fit tight to the Corner. Secure by hard fastening at the mitered end into the flange of the Corner to ensure joints do not open up (see Detail C & D). Butt-joints are not permitted when using the Precision Components, and components should be installed every 6' 8" (2m) max.

DO NOT hard fasten more than one (1) location per plank:

Butt-joints: at the joints

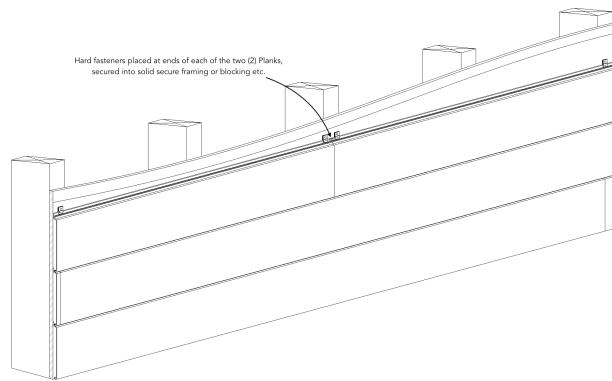
Precision Outside Corner: at the Corner

No butt-joints/Precision Outside Corner: center of planks

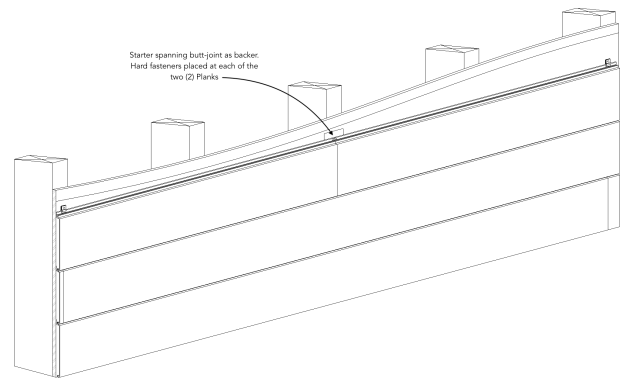
DO NOT install more than one (1) butt-joint between two components

DO NOT hard fasten a plank to a component trim*, as this will restrict its ability to expand & contract into the component (*with the exception of the Precision Outside Corner)

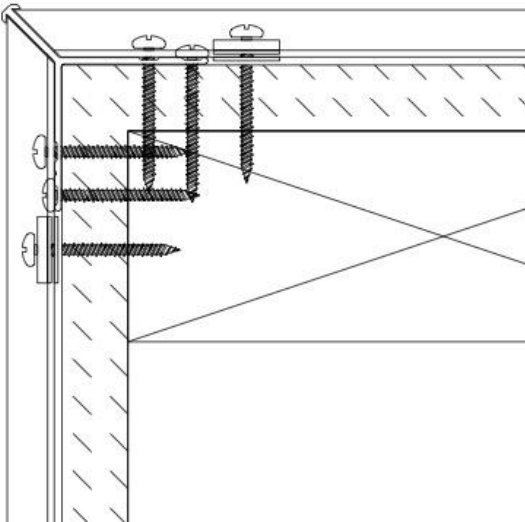
Detail A:



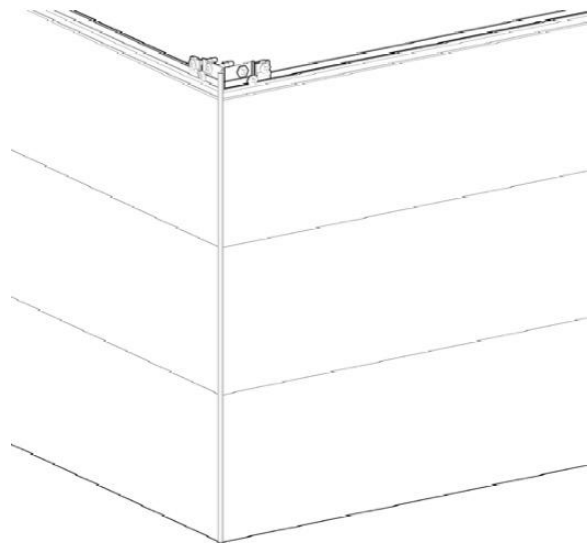
Detail B:



Detail C:



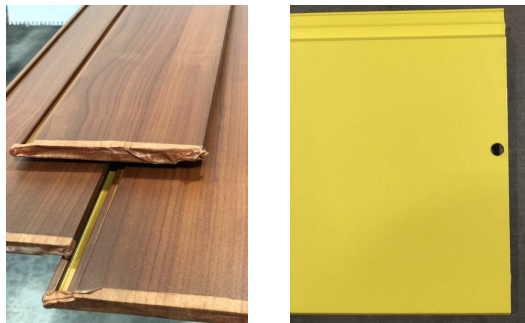
Detail D:



1.5. Surface Finish

The Longboard T&G Siding system is available in a range of Woodgrain, Solid & Specialty Finishes with custom* solid colors available upon request. **Additional lead times apply*
Longboard Woodgrains have a repeat pattern, shipped in sets mated back-to-back in each box. Install these as they come out of the box, as an A&B pattern staggering each plank approx. 1-2' (305-610mm) from the previous plank to achieve a random pattern aesthetic.

All Longboard Products are produced 1" (25mm) oversized, as one end is drilled (all finishes) and both ends have 1/2" (12mm) of masking tape (woodgrains only) which must be cut off for best results.



1.6. Material Ordering & Delivery

Planks are sold in box quantities:

6" V-Groove & 6" Channel: 96 SQ FT/Box (8/24's) w. 90pcs Quick-Screen Clips included*

4" V-Groove: 96 SQ FT/Box (12/24's) w. 135 Quick-Screen Clips included*

(*for 32" (813mm) o.c. attachment)

Components are sold individually by the 12' (3.7m) length.

Lead time is 3-6 business days* + shipping (**subject to change*), delivered on 24' (7.3m) long skids weighing up to 2000 lbs. A mechanical lift with forks is required on site to receive the order.

⚠ Always inspect the delivery for damage and contact LB ASAP if there are any issues: info@longboardproducts.com or 1-800-604-0343 and include your PO# and any pictures if possible. Mark the delivery receipt as "damaged" and accept the delivery as-is. Longboard is not responsible for the installation of blemished or damaged material.

1.7. Storage & Handling

Be sure to store the material flat, keep it dry, safe & secure and remain in unopened cartons until ready to be installed. Ensure proper care when handling, to avoid damage on site.

2.0. FRAMING REQUIREMENTS

2.1. General

Always consult the local building authority and follow local building code requirements.

2.2. Load Capacity

The Longboard T&G Siding system weighs approx. 1.5lbs/sq.ft. **see section drawings for individual item weights.*

2.3.1. Wood-Framing

Traditional stud wall framed at 16" (406mm) O.C. with or without solid secure blocking running perpendicular to the plank orientation (for vertical siding applications), exterior wall sheathing, weather resistive barrier (wrb). If furring strips are used: install at 16" (406mm) O.C.

2.3.2. Metal Framing

18ga. (minimum)(see 1.4.Table 1) galvanized steel framing at 16" (406mm) O.C. , exterior wall sheathing, wrb. If furring strips are used: install at 16" (406mm) O.C.

2.3.3. CMU/Concrete

Wrb, wood or metal furring strips (see 2.3.1. and 2.3.2. for standard requirements).

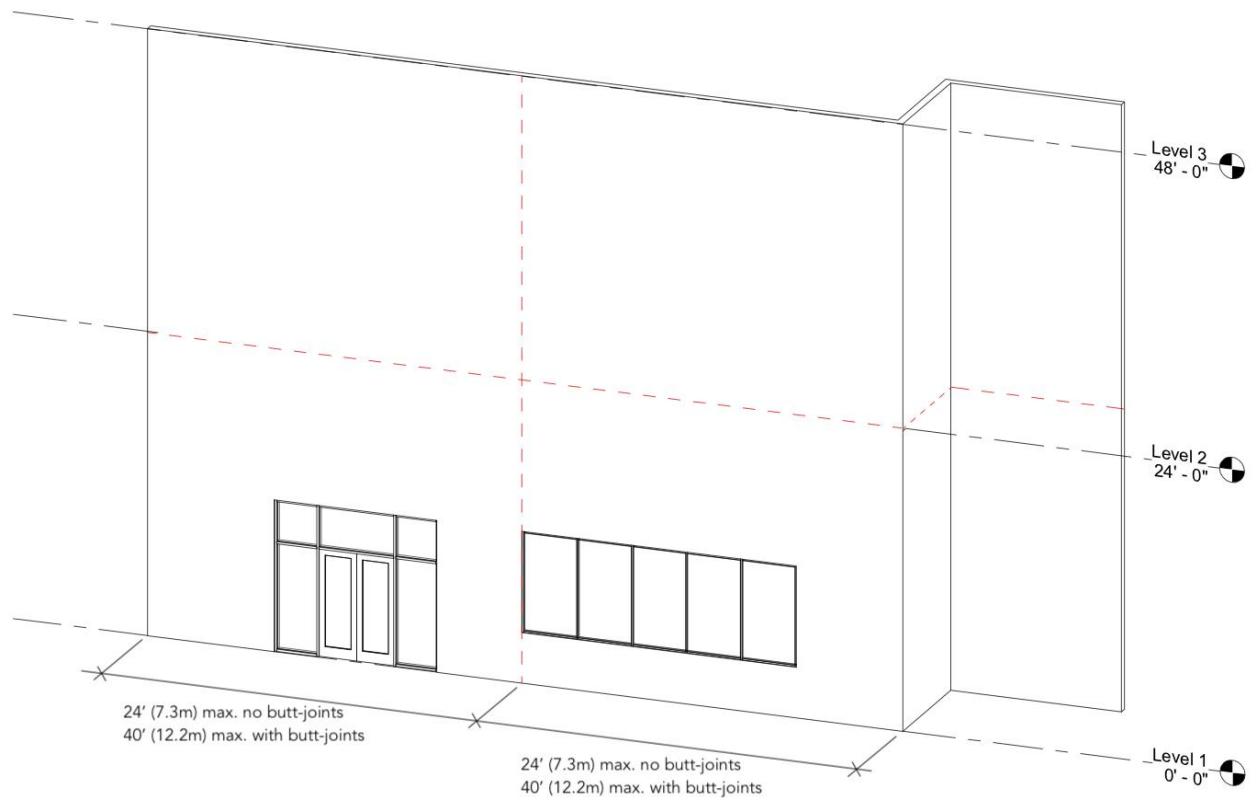
2.4. Framing Layout

Provide solid secure framing and/or blocking at 16" (406mm) O.C. for material support and attachment at 32" (813mm) O.C. (standard requirements). Where reveal trims are used; ensure all components land on a stud, blocking or 5/8" (16mm) wood sheathing is used.

3.0. SYSTEM INSTALLATION

3.1. Layout

Measure and layout your wall area to consider plank & component alignment with fixtures, penetrations and adjacent walls, for desired appearance (Traditional Components used for illustrative purposes).



3.2. Component Installation

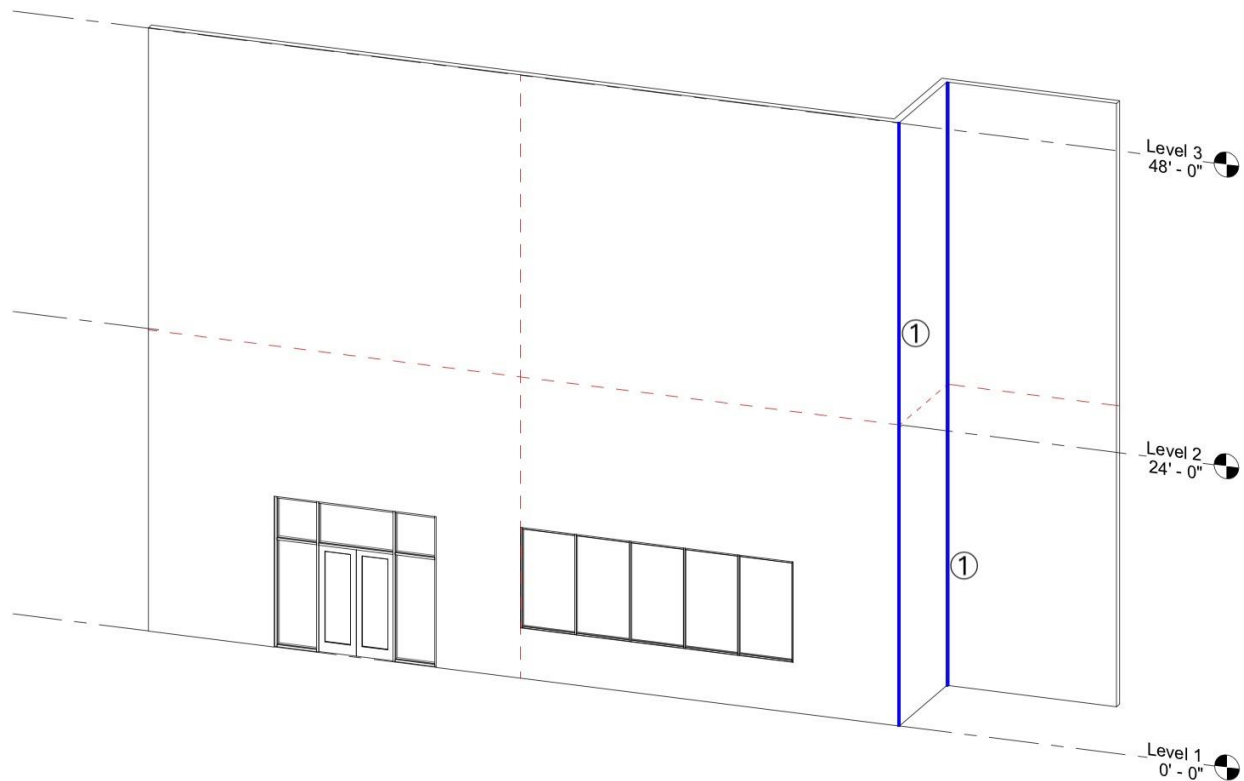
It is good practice to leave a 1/4" (6mm) gap between every 2nd joint or 24' (7.3m) of all components, to allow for expansion & contraction. Consider the preferred joints where components meet each other, to dictate which component is installed first (eg: right angle butt joints, mitered joints etc.).

**see Appendix for material details or website for full info section drawings*

3.2.①. Corners

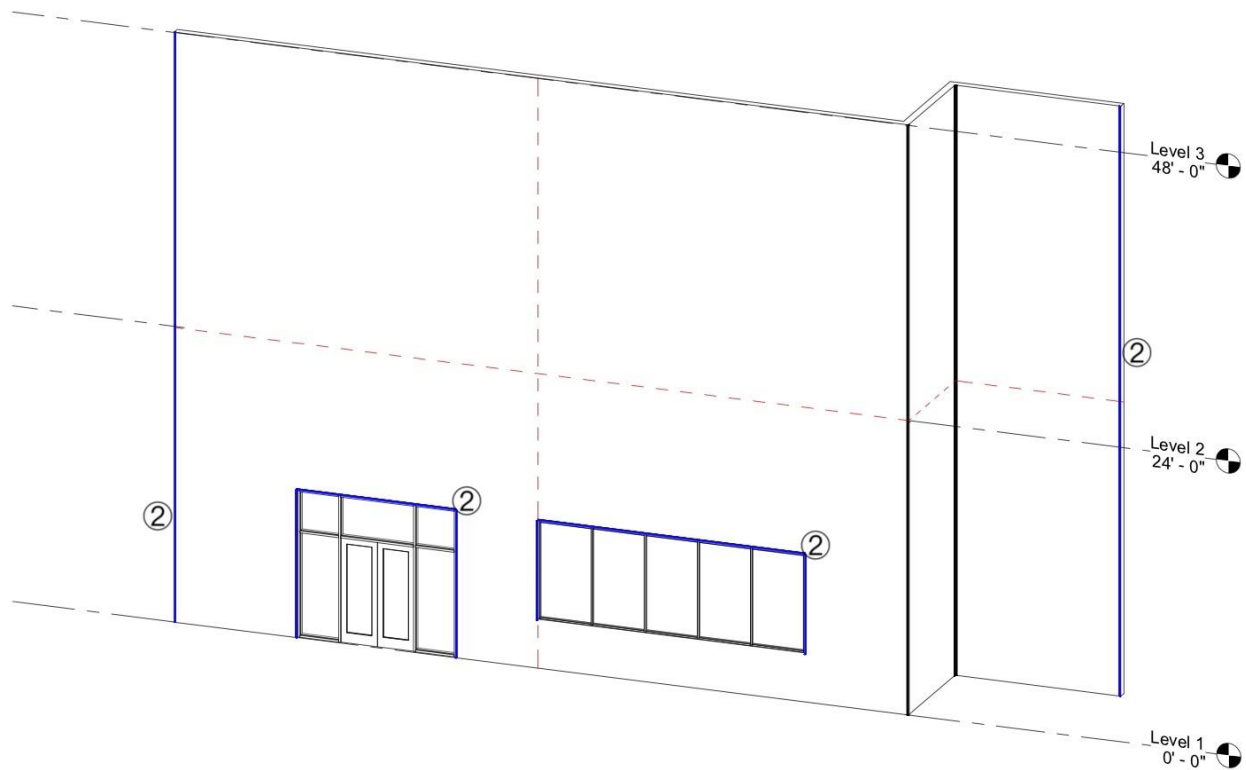
Install Inside & Outside Corners.

**The Traditional Corner Set is recommended for vertical siding installs, at both inside and outside conditions.*



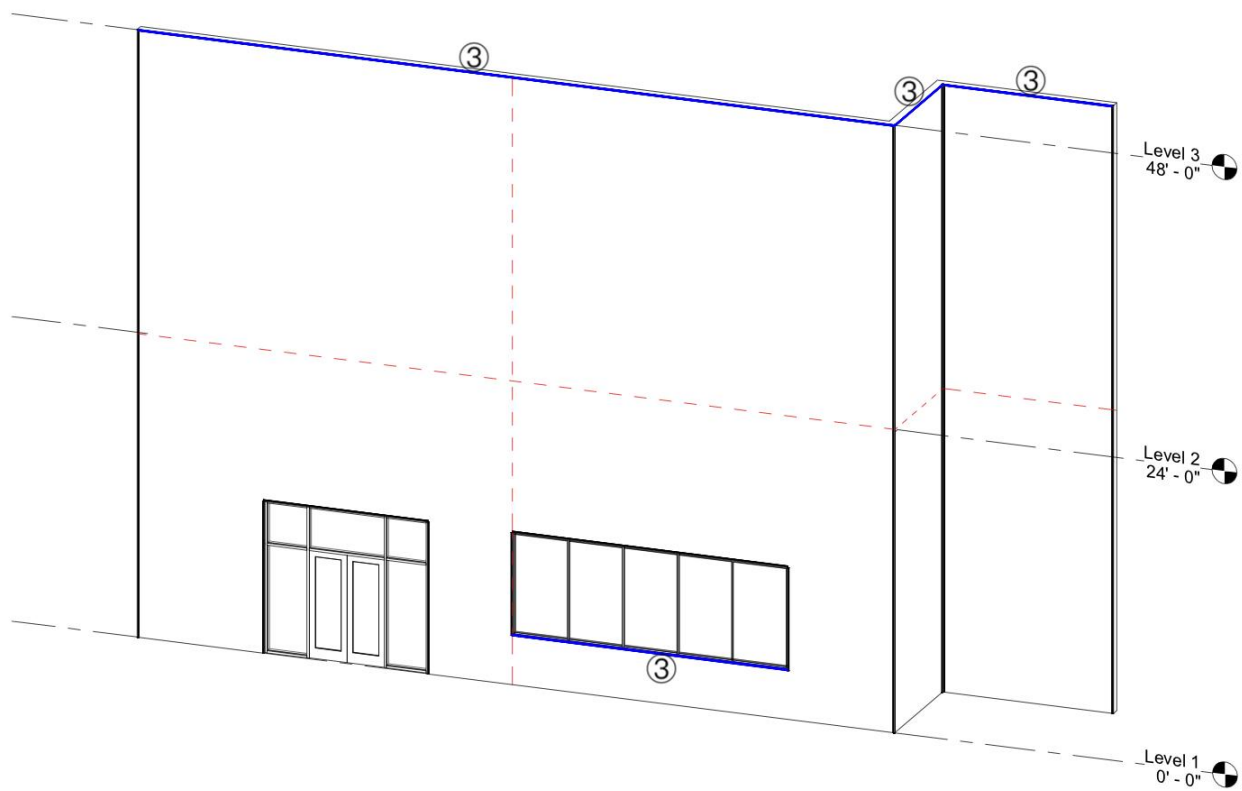
3.2.②. J-Track/Two Piece J-Track

Install J-Track or Two Piece J-Track where perpendicular to the plank orientation. Notch the flange at the ends where meeting Corner Components. J-Track (horizontal installs only) or Two Piece J-Track is also typically used at the sides and headers of doors, windows & other penetrations.



3.2.③. Termination Set

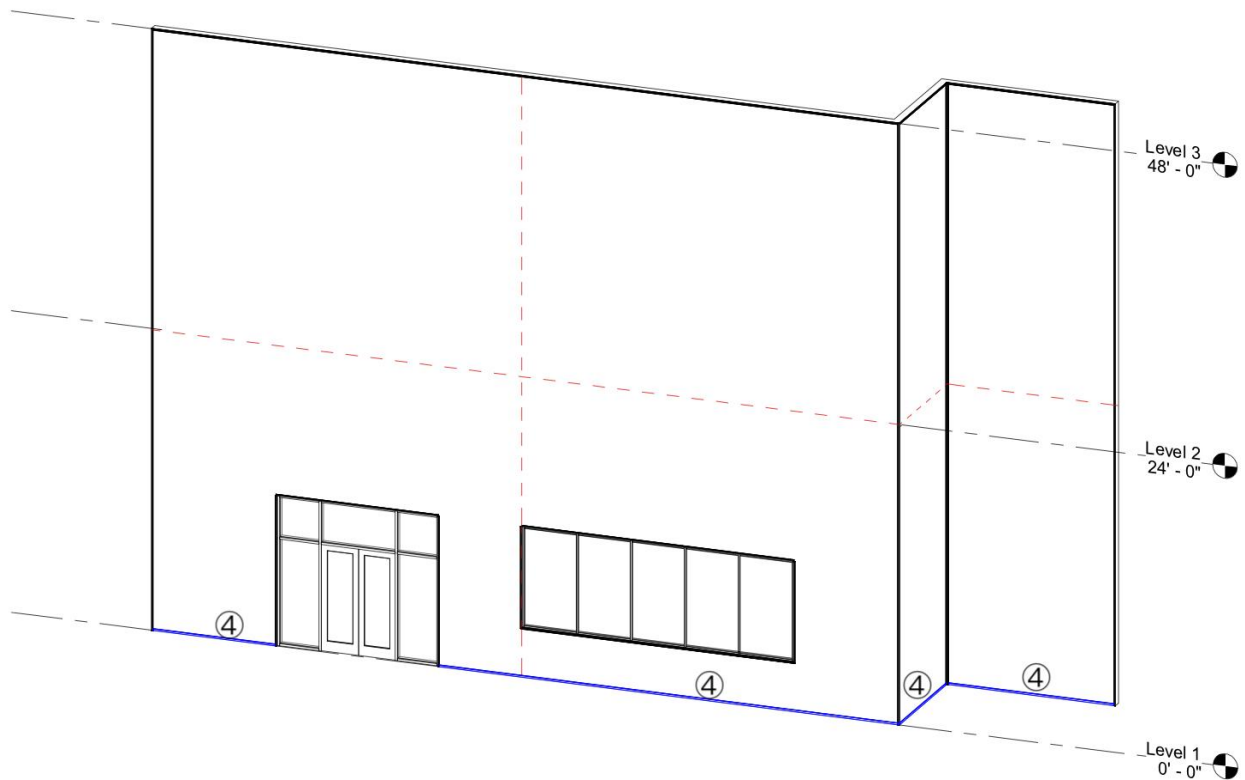
Install the Termination Set (base only) along the tops of walls and underside of windows (horizontal installs) or end wall terminations where parallel to the planks.



3.2.④. Starter/Starter J-Track

Install Starter or Starter J-Track along the bottom of the wall(s)(horizontal installs) or two Starters back-to-back* (vertical installs) at the center of each siding area, for equal width planks at either end.

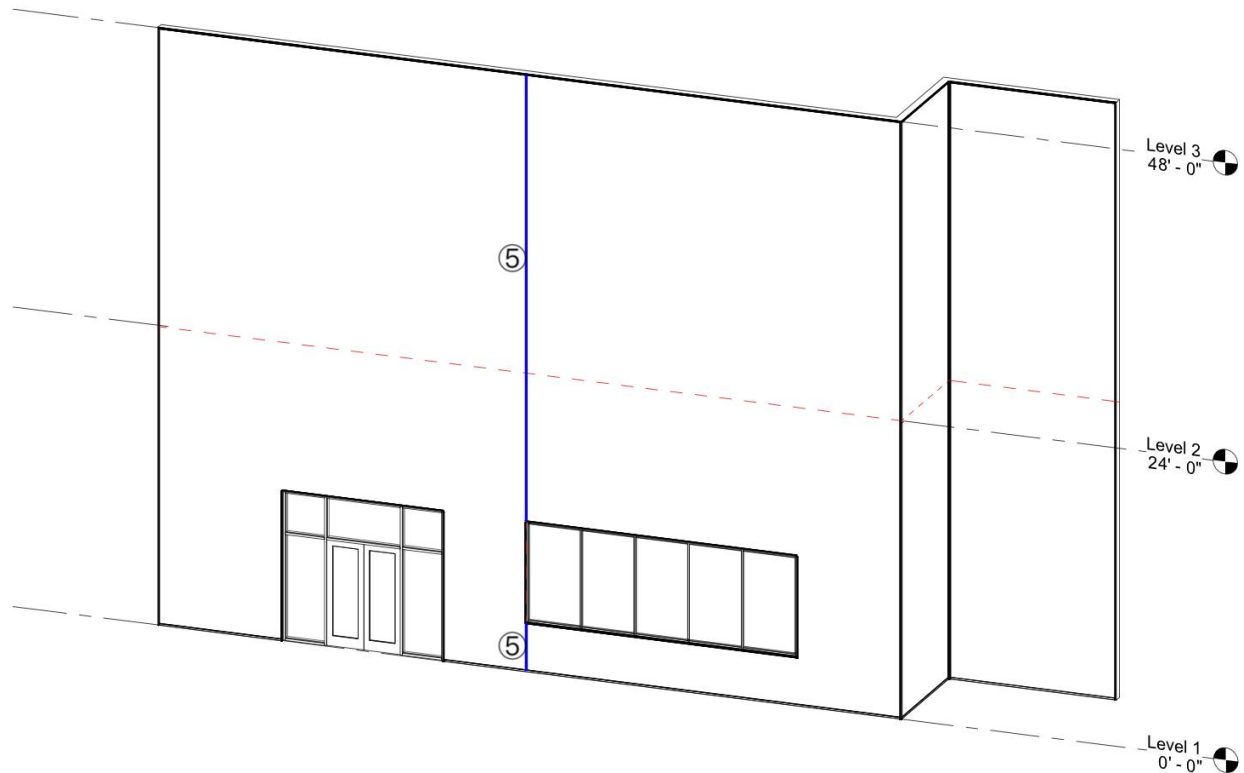
**Option to start at one side if using the Channel profile or where non-equal width planks is acceptable.*



3.2.⑤. Expansion Reveal

For wall areas greater than 24' (7.3m) long (no butt-joints) or 40' (12.2m) long (with staggered butt-joints), install the Base for the Traditional Flat Reveal Set/Traditional U-Reveal Set. Where using the Craftsman U-Reveal Set, install this component every 12' (3.7m). Where using the Precision Flat Reveal, install this component every 6' 8" (2m).

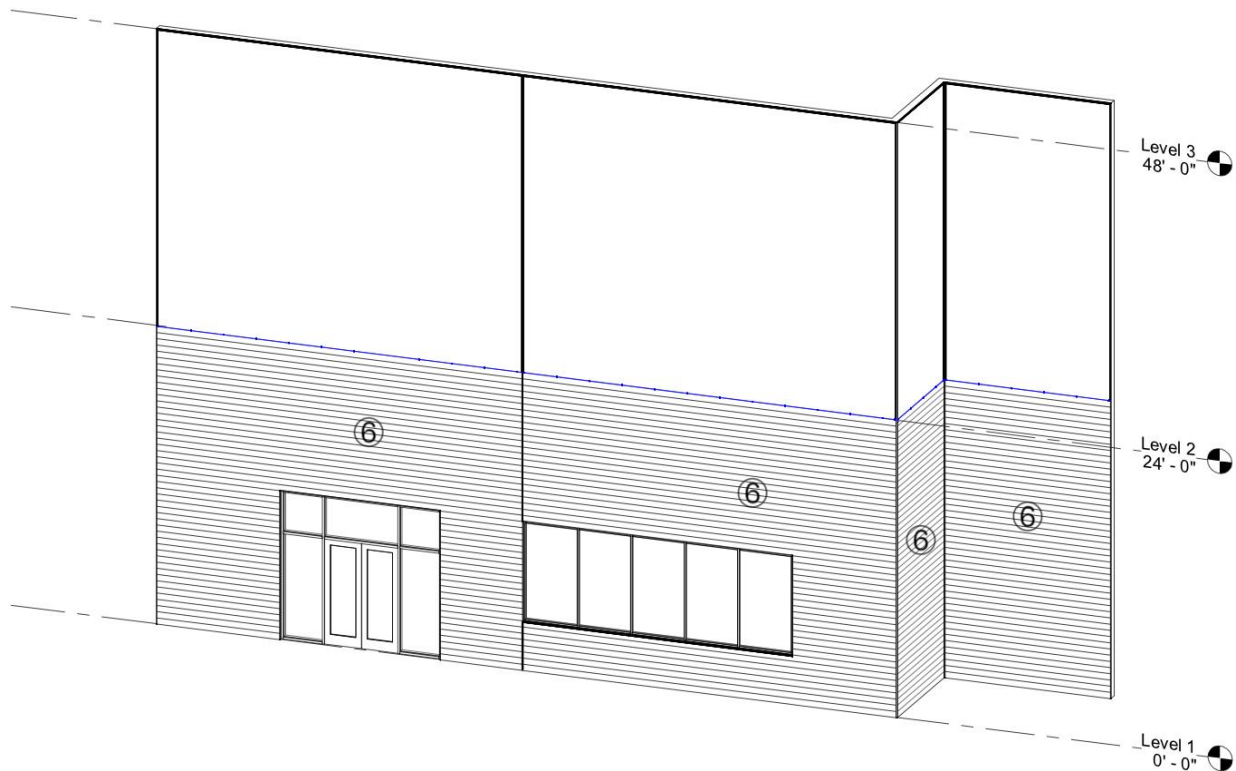
Ensure the component is landing on a solid substrate sufficient to hold the fasteners.



3.2.⑥. Planks

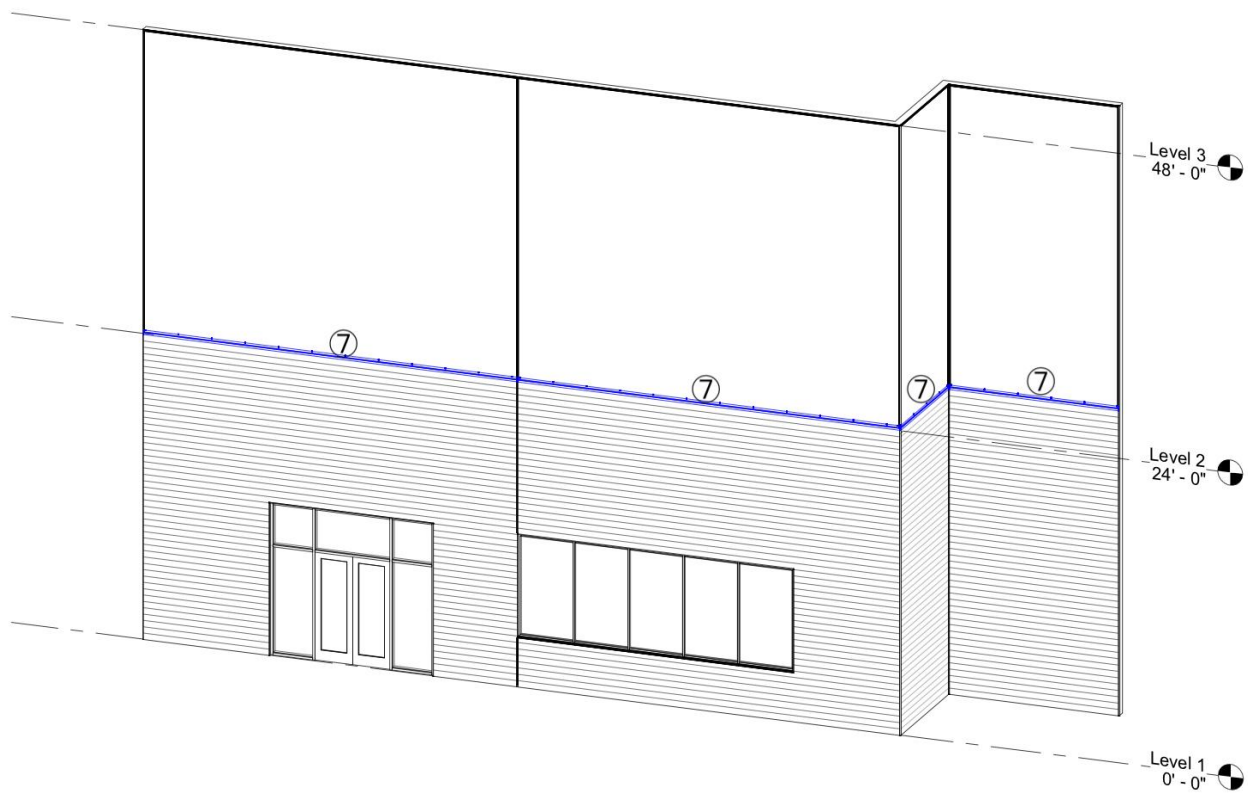
Install the first row of planks, engaging with the tongue of the Starter or Starter J-Track. Check for a level installation, shim Quick-Screen Clips where needed to correct any substrate inconsistencies.

TIP! It is good practice to check your installation every 2-3 rows for level/plumb and flat/straight, for best results.



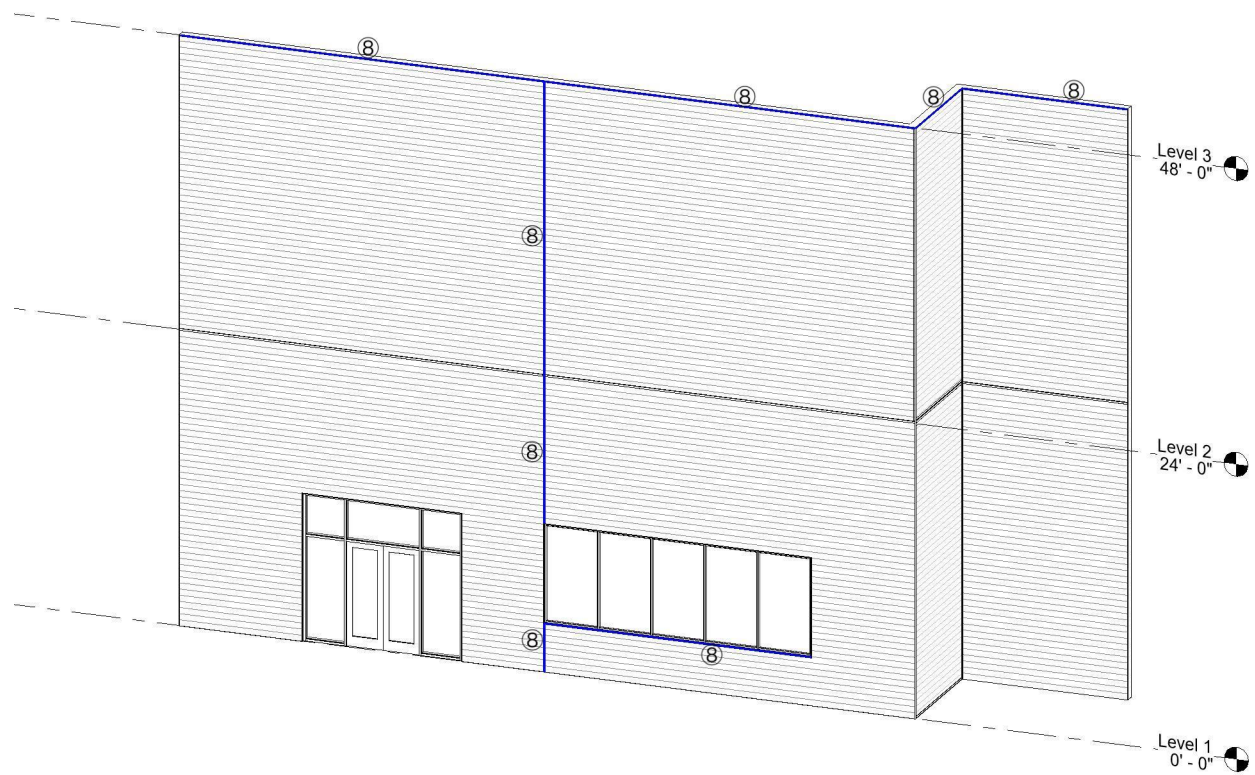
3.2.⑦. Compression Joint

Install the Compression Joint where required, in conjunction with the siding installation. The Compression Joint is installed with horizontal siding only, at each or every other floor elevation or every 24' (7.3m) of siding area. It is recommended to be used at each floor elevation in wood-frame construction.



3.2.⑧. Component Caps

Install all caps: Flat Reveal Set, U-Reveal Set, Two Piece J-Track, Termination Set, Corner Set.
Use a rubber mallet, hammer and block etc. to protect the finish during this process.



4.0. Cleaning Recommendations


**see Cleaning Guide for full requirements*

longboardproducts.com

While Longboard finishes require zero maintenance, we do recommend periodic cleaning to keep the product looking its best. Our finish is tested to withstand corrosion, fading and normal wear, however, neglect and rough conditions could have negative effects on the surface finish. These effects will not negate the structural performance of the product, but prolonged exposure to these conditions may result in permanent markings or surface damage.

Cleaning should be done in mild weather, and never in direct sunlight. Always complete a test patch on an inconspicuous area to ensure your detergent is suitable for the surface.

Your Longboard products should be cleaned immediately after installation. This is to remove any construction soils such as oils or dust. How to complete this initial cleaning depends on the level of dirt and the nature of the soil. See the cleaning guide for our suggestions based on soil level. Basic methods use a combination of moderate water pressure, soft sponge/brush and a mild detergent.


 NEVER use aggressive acid or alkaline cleaners on Longboard finishes. Do not use cleaners containing Trisodium Phosphate, Phosphoric Acid, Hydrochloric Acid, Hydrofluoric Acid, Fluorides or any other compound that is known to react with metal.

Always follow the product instructions for dilution. Cleaning the surface with a cleanser that is not diluted may result in damage to the coating.

5.0. WARRANTY

Upon substantial completion of the project, register for warranty online here:








longboardproducts.com/warranty





 Registration is required for the warranty to be in effect.









APPENDIX

INSTRUCTION STEP #	IMAGE	DESCRIPTION	TYPICAL USE
①		CRAFTSMAN INSIDE CORNER, 12' (3.7m) LENGTHS, WOODGRAIN, SOLID, SPECIALTY, CUSTOM SOLID.	INSIDE CORNER CONDITIONS, PERPENDICULAR TO PLANKS. 12' (3.7m) MAX. BETWEEN COMPONENTS.
①		CRAFTSMAN OUTSIDE CORNER, 12' (3.7m) LENGTHS, WOODGRAIN, SOLID, SPECIALTY, CUSTOM SOLID	OUTSIDE CORNER CONDITIONS, PERPENDICULAR TO PLANKS. 12' (3.7m) MAX. BETWEEN COMPONENTS.
① ⑧		TRADITIONAL CORNER SET, 12' (3.7m) LENGTHS, WOODGRAIN, SOLID, SPECIALTY, CUSTOM SOLID	OUTSIDE & INSIDE CORNER CONDITIONS, PARALLEL & PERPENDICULAR TO PLANKS. 24' (7.3m) MAX*. BETWEEN COMPONENTS. <i>*40' (12.2m) max. where staggered butt-joints are used</i>
①		PRECISION OUTSIDE CORNER, 12' (3.7m) LENGTHS, WOODGRAIN, SOLID, SPECIALTY, CUSTOM SOLID	OUTSIDE CORNER CONDITIONS, PERPENDICULAR TO PLANKS. 6' 8" (2m) MAX. BETWEEN COMPONENTS. BUTT-JOINTS IN PLANKS SHOULD NOT BE USED.

INSTRUCTION STEP #	IMAGE	DESCRIPTION	TYPICAL USE
②		PRECISION J-TRACK, 12' (3.7m) LENGTHS, WOODGRAIN, SOLID, SPECIALTY, CUSTOM SOLID	PERPENDICULAR TO PLANKS AROUND WINDOWS, DOORS & END CONDITIONS
② ⑧		TRADITIONAL TWO PIECE J-TRACK, 12' (3.7m) LENGTHS, WOODGRAIN, SOLID, SPECIALTY, CUSTOM SOLID	PERPENDICULAR TO PLANKS, USED AS AN EDGE TERMINATION COMPONENT. 24' (7.3m) MAX*. BETWEEN COMPONENTS. <i>*40' (12.2m) max. where staggered butt-joints are used</i>
② ⑧		PRECISION TWO PIECE J-TRACK, 12' (3.7m) LENGTHS, WOODGRAIN, SOLID, SPECIALTY, CUSTOM SOLID	PERPENDICULAR TO PLANKS, USED AS AN EDGE TERMINATION COMPONENT. 6' 8" (2m) MAX. BETWEEN COMPONENTS.
③ ⑧		TRADITIONAL TERMINATION SET, 12' (3.7m) LENGTHS, WOODGRAIN, SOLID, SPECIALTY, CUSTOM SOLID	PARALLEL TO PLANKS, USED AS AN EDGE TERMINATION COMPONENT.
③ ⑧		PRECISION TERMINATION SET, 12' (3.7m) LENGTHS, WOODGRAIN, SOLID, SPECIALTY, CUSTOM SOLID	PARALLEL TO PLANKS, USED AS AN EDGE TERMINATION COMPONENT.
④		STARTER, 12' (3.7m) LENGTHS, MILL FINISH (RAW ALUMINUM), WOODGRAIN, SOLID, SPECIALTY, CUSTOM SOLID	PARALLEL TO THE STARTING PLANK, WHERE THE CLEAN AESTHETIC OF NO TRIM IS PREFERRED.
④		PRECISION STARTER J-TRACK, 12' (3.7m) LENGTHS, MILL FINISH (RAW ALUMINUM), WOODGRAIN, SOLID, SPECIALTY, CUSTOM SOLID	PARALLEL TO THE STARTING PLANK, WHERE THE AESTHETIC OF THE J-TRACK IS PREFERRED OVER STARTER ONLY.

INSTRUCTION STEP #	IMAGE	DESCRIPTION	TYPICAL USE
⑤ ⑧		TRADITIONAL U-REVEAL SET, 12' (3.7m) LENGTHS, WOODGRAIN, SOLID, SPECIALTY, CUSTOM SOLID	EXPANSION COMPONENT IN THE FIELD OF THE WALL AREA, PERPENDICULAR TO PLANKS. 24' (7.3m) MAX*. BETWEEN COMPONENTS. <i>*40' (12.2m) max. where staggered butt-joints are used</i>
⑤ ⑧		CRAFTSMAN U-REVEAL SET, 12' (3.7m) LENGTHS, WOODGRAIN, SOLID, SPECIALTY, CUSTOM SOLID	EXPANSION COMPONENT IN THE FIELD OF THE WALL AREA, PERPENDICULAR TO PLANKS. 12' (3.7m) MAX*. BETWEEN COMPONENTS.
⑤ ⑧		TRADITIONAL FLAT REVEAL SET, 12' (3.7m) LENGTHS, WOODGRAIN, SOLID, SPECIALTY, CUSTOM SOLID	EXPANSION COMPONENT IN THE FIELD OF THE WALL AREA, PERPENDICULAR TO PLANKS. 24' (7.3m) MAX*. BETWEEN COMPONENTS. <i>*40' (12.2m) max. where staggered butt-joints are used</i>
⑤		PRECISION FLAT REVEAL, 12' (3.7m) LENGTHS, WOODGRAIN, SOLID, SPECIALTY, CUSTOM SOLID	EXPANSION COMPONENT IN THE FIELD OF THE WALL AREA, PERPENDICULAR TO PLANKS. 6' 8" (2m) MAX. BETWEEN COMPONENTS. BUTT-JOINTS IN PLANKS SHOULD <u>NOT</u> BE USED.

INSTRUCTION STEP #	IMAGE	DESCRIPTION	TYPICAL USE
④ ⑥		QUICK-SCREEN CLIP, 316 STAINLESS STEEL	PLANK & STARTER ATTACHMENT CLIP (USE #8 SCREW, SUPPLIED BY OTHERS)
⑥		4" V-GROOVE SIDING PLANK, 24' (7.3m) LENGTHS, WOODGRAIN, SOLID, SPECIALTY, CUSTOM SOLID	SIDING PLANK
⑥		6" V-GROOVE SIDING PLANK, 24' (7.3m) LENGTHS, WOODGRAIN, SOLID, SPECIALTY, CUSTOM SOLID	SIDING PLANK
⑥		6" CHANNEL SIDING PLANK, 24' (7.3m) LENGTHS, WOODGRAIN, SOLID, SPECIALTY, CUSTOM SOLID	SIDING PLANK
⑦		COMPRESSION JOINT, 24' (7.3m) LENGTHS, WOODGRAIN, SOLID, SPECIALTY, CUSTOM SOLID	HORIZONTAL JOINT, INSTALLED AT EACH* FLOOR ELEVATION OR EVERY 24' MAX. OF SIDING AREA. <i>*WOOD-FRAME CONSTRUCTION</i>
		PAINT PEN, WOODGRAIN, SOLID, SPECIALTY, CUSTOM SOLID	USED AT EXPOSED CUT ENDS (EG: COMPONENT ENDS AND BUTT-JOINTS)



Light Cherry



Dark Cherry



Western Cedar



Light Fir



Dark Fir



Dark Walnut



Light National Walnut



Dark National Walnut



Table Walnut

Most Popular Woodgrains



Italian Rosewood



LONGBOARD®
INSPIRING FACADES



LONGBOARD®
INSPIRING FACADES

Weathered Grey (Interior Only)



LONGBOARD®
INSPIRING FACADES

Sand Drift (Interior Only)



LONGBOARD®
INSPIRING FACADES

Light Oak



LONGBOARD®
INSPIRING FACADES

Dark Knotty Pine



LONGBOARD®
INSPIRING FACADES

Dark Antique Oak



LONGBOARD®
INSPIRING FACADES

Dark Acacia



LONGBOARD®
INSPIRING FACADES

Light Bamboo



LONGBOARD®
INSPIRING FACADES

Dark Bamboo



LONGBOARD®
INSPIRING FACADES

White Oak

Additional Woodgrains



LONGBOARD®
INSPIRING FACADES

Birchwood



LONGBOARD®
INSPIRING FACADES



Black

Brick Red

Medium Blue



Dark Brown

Classic Bronze

Slate Grey



Ultra White

C. Charcoal

Charcoal

Standard Solid Colours



Bone White



LONGBOARD®
INSPIRING FACADES



Biscotti



Canyon Vista



Burnt Sienna



Venus



Platinum Ice



Moonstone

Specialty Finishes

**** NEW ****



LONGBOARD®
INSPIRING FACADES



Anodic Ice



Copper Penny



Old Navy



Ceramic Clay



Mayne Inc. #120 – 1777 Clearbrook Rd Abbotsford, BC Canada V2T 5X5
Mayne Inc. the Manufacturers of Longboard® Products
Office: 1.800.604.0343
Email: info@longboardproducts.com
Web: longboardproducts.com

15 Year Powder Coating Finish Limited Warranty for Longboard Products
50 Year Extruded Aluminum Profiles Limited Warranty for Longboard Products

warrants to;

Please input company name that's registering the warranty

that any Longboard products as identified by the Product Codes listed below, Longboard products will conform to the standards set out in Clause 1 and Clause 2 of this Warranty, subject to the terms and conditions set out in Clause 3 and 4 of this Warranty.





Product Codes	Description





Print Name of Contractor or Owner:

Project Name:

Property Address:

Substantial Date of Completion:

Description of Product on jobsite:





I have read and agree to the terms of the Mayne Inc.'s Longboard Product 15 year powder coated surface and 50 year aluminum extruded profile(s) warranty and acknowledge receipt of a copy of the Warranty Certificate.

(Name of Owner/Contractor)

(Signature)

(Date)

Duly authorized for on behalf of Mayne Inc.

(Name and Designation)

(Signature)

(Date)





Clause 1.0

Extruded Aluminum Profile(s)

Mayne Inc. expressly warrants that its product line is free from manufacturing defects in material or workmanship.

- 1.1 When siding is applied according to Longboard instructions and properly maintained, such product is guaranteed against the following:
- 1.2 Buckling: The product itself will be free of any buckling that is not associated with the substrate and/or structure to which the Longboard system is attached. For the purpose of this warranty, buckling shall be defined as warping of the product(s) exceeding one sixteenth of an inch out of plane per linear foot.
- 1.3 Corrosion: When applied according to Mayne Inc. instructions and properly maintained, such product is further guaranteed against rusting and corroding. Subject to the limitations set out in Clause 3 and 4.
- 1.4 What we will do: If, during the fifteenth (15th) year Limited Warranty Period on the powder coating finish, the Product is defective in material or workmanship, Mayne Inc. will, in its sole discretion, either repair or replace the defective portion of the Product.
- 1.5 What we will do: If, during the 50-year Limited Warranty Period on the aluminum extruded profiles, the Product is defective in material or workmanship, Mayne Inc. will, in its sole discretion, either repair or replace the defective portion of the Product.





Clause 1.0 continued
Extruded Aluminum Profile(s)

Mayne Inc. expressly warrants that its product line is free from manufacturing defects in material or workmanship continued:

- 1.5 After the 15th year, this Limited Warranty on the powder coated finish will expire and shall no longer be applicable.
- 1.6 After the 50th year, this Limited Warranty on the aluminum extruded profile(s) will expire and shall no longer be applicable.
- 1.7 Mayne Inc. replacement of the defective Product or reimbursement of this Limited Warranty is the exclusive remedy for the Covered Person for any defect in materials or workmanship. Mayne Inc. will not refund or pay any costs in connection with labor or accessory materials.



Clause 2.0
Alluminate Ultra Finish

- 2.1 During the first fifteen (15) years of this warranty:
- 2.2 Checking/Cracking: No visible checking or cracking of the Alluminate Ultra Finish on the building.
- 2.3 Chalking Resistance: No chalking of the Alluminate Ultra Finish on the building in excess of that represented by No.6 rating based on ASTM D4214.
- 2.4 Color Retention: No color change of the Alluminate Ultra Finish on the building greater than 5 (five) CIE Lab ΔE units calculated in accordance with ASTM 2244 Section 6.3. Color change shall be measured on the exposed paint surface which has been cleaned of oil, grease, chalk, oxidized film or other contaminants, corresponding values shall be measured on the control panel.
- 2.5 Gloss Retention: Coated surface will exhibit gloss retention of a minimum of 30% of the original. Gloss retention shall be measured on the exposed paint surface which has been cleaned of oil, grease, chalk, oxidized film or other contaminants, corresponding values shall be measured on the control panel.
- 2.6 Adhesion: Adhesion of Alluminate Ultra Finish when initially applied to test panels and measured by reference to AAMA 2604-02 Clause 7.4.2 will show no removal of the film.

Clause 3.0

3.1 Warranty Terms and Conditions:

3.2 The "Warranty Period" for the warranties in Clause 1 shall mean fifty (50) years or for as long as the original "owner" and/or "purchaser" named above shall live and own the property on which the material was originally installed.

3.3 Clause 3: Shall mean fifteen (15) years, commencing on the date of completion.

3.4 Registration of the product is required for the warranty to be in effect. This warranty is valid for the original purchaser and one other owner of the structure where the product(s) have been installed.

3.7 Normal atmospheric conditions exclude corrosive or aggressive atmospheres such as those contaminated with chemical fumes or other corrosive elements. The Aluminate Ultra finish is not meant for marine use on boats, ships or offshore platforms.

Clause 4.0

4.1 This warranty will not extend or cover:

4.2 Damages to the coated metal caused by handling, shipping, processing and/or installation; or

4.3 Damages to the coated metal caused by scratching or abrading after installation; or

4.4 Damages to the coated metal as a result of standing water in horizontal installations.

Clause 4.0 continued

- 4.5 The warranty will not be applicable to damage or failure, which is caused by acts of God, falling objects, external forces, explosions, fire, riots, civil commotion's, acts of war, or other such similar or dissimilar occurrences beyond Mayne Inc.'s control.
- 4.6 Customer shall make available to Mayne Inc. the dates of the installation of the coated metal, the maintenance records including details of washing and cleaning procedures in compliance with the annual cleaning requirements as stated in the Required Maintenance section of this warranty. Customers shall demonstrate that the failure of the coated metal was due to a breach of the warranty stated herein.
- 4.7 Claims must be made in writing to Mayne Inc. within 30 days of the discovery of a problem and authorization obtained prior to beginning any repair and/or refinishing work. The claimant must provide proof of coverage. Claims can be made by writing to Mayne Inc. at the Product Performance Department. After receiving such notice, Mayne Inc. must be given a reasonable opportunity to inspect and verify the claim.
- 4.8 Mayne Inc. exclusive liability under this warranty, or otherwise, will be limited to refinishing and/or repairing, at Mayne Inc.'s sole discretion, the defective powder coating. The warranty on any refinished, repaired or replaced coated metal supplied hereunder shall be for the remainder of the warranty period applicable to the originally coated metal. All warranty work will be performed by a company or contractor selected by Mayne Inc. Color variance between refinished and/or repainted product and original shall not be indicative of a defect.

Clause 4.0 continued

- 4.9 This warranty represents the entire agreement between parties in relation to its subject matter and supersedes any previous agreement whether written or oral between the parties in relation to its subject matter. The limited warranties state the entire liability of Mayne Inc. with respect to the products covered by them. Mayne Inc. Shall have no liability for any incidental or consequential damages. No person is authorized to make any representation or warranty on behalf of Mayne Inc. except as expressly set forth above, and any such statement shall not be binding on Mayne Inc. Except as expressly set forth above, Mayne Inc makes no warranty of any kind, express or implied, including, without limitation, any implied warranty of merchantability or fitness for a particular purpose. Warranties shall be the duration of the limited warranty or such shorter duration as provided under applicable local law. These limited warranties give you specific legal rights, and you may also have other rights which vary from area to area.
- 4.91 Nothing in this warranty shall be construed as a warranty of the workmanship of any installer or as imposing on Mayne Inc. any liability for unsatisfactory performance caused by faulty workmanship in installation.
- 4.92 It's agreed all parties involved that all claims and disputes relating to this agreement that cannot be settled through negotiation will try in good faith to first settle the dispute by mediation administered by the American Arbitration Association (Construction Industry Mediation Procedures) as a prelude to mandatory binding arbitration. Such binding arbitration is to be conducted and administered by the Construction Industry Arbitration Rules of the American Arbitration Association. Both seller and purchaser agree to share equally in the costs of both mediation and arbitration and that such binding arbitration will be the sole and final remedial action.
- 4.93 Required Maintenance. On an annual basis use a soft sponge or cloth, water and mild detergent, non-abrasive soap with the pH range of 5-9 to clean the powder coated area of dirt, grim and other debris. Pressure washing and the use of harsh detergents or chemicals is not recommended. Include in your maintenance records the following: date, time, specific products used, name of maintenance person and their designation, maintenance company name and general condition of the powder coated finish.



Mayne Inc. #120 – 1777 Clearbrook Rd Abbotsford, BC Canada V2T 5X5
Mayne Inc. the Manufacturers of Longboard® Products
Office: 1.800.604.0343
Email: info@longboardproducts.com
Web: longboardproducts.com

20 Year Powder Coating Finish Limited Warranty for Longboard Products
50 Year Extruded Aluminum Profiles Limited Warranty for Longboard Products

warrants to;

Please input company name that's registering the warranty

that any Longboard products as identified by the Product Codes listed below, Longboard products will conform to the standards set out in Clause 1 and Clause 2 of this Warranty, subject to the terms and conditions set out in Clause 3 and 4 of this Warranty.





Product Codes	Description





Print Name of Contractor or Owner:

Project Name:

Property Address:

Substantial Date of Completion:

Description of Product on jobsite:





I have read and agree to the terms of the Mayne Inc.'s Longboard Product 20 year powder coated surface and 50 year aluminum extruded profile(s) warranty and acknowledge receipt of a copy of the Warranty Certificate.

(Name of Owner/Contractor)

(Signature)

(Date)

Duly authorized for on behalf of Mayne Inc.

(Name and Designation)

(Signature)

(Date)





Clause 1.0

Extruded Aluminum Profile(s)

Mayne Inc. expressly warrants that its product line is free from manufacturing defects in material or workmanship.

- 1.1 When siding is applied according to Longboard instructions and properly maintained, such product is guaranteed against the following:
- 1.2 Buckling: The product itself will be free of any buckling that is not associated with the substrate and/or structure to which the Longboard system is attached. For the purpose of this warranty, buckling shall be defined as warping of the product(s) exceeding one sixteenth of an inch out of plane per linear foot.
- 1.3 Corrosion: When applied according to Mayne Inc. instructions and properly maintained, such product is further guaranteed against rusting and corroding. Subject to the limitations set out in Clause 3 and 4.
- 1.4 What we will do: If, during the twenty (20) year Limited Warranty Period on the powder coating finish, the Product is defective in material or workmanship, Mayne Inc. will, in its sole discretion, either repair or replace the defective portion of the Product.
- 1.5 What we will do: If, during the 50-year Limited Warranty Period on the aluminum extruded profiles, the Product is defective in material or workmanship, Mayne Inc. will, in its sole discretion, either repair or replace the defective portion of the Product.





Clause 1.0 continued
Extruded Aluminum Profile(s)

Mayne Inc. expressly warrants that its product line is free from manufacturing defects in material or workmanship continued:

- 1.5 After the 20th year, this Limited Warranty on the powder coated finish will expire and shall no longer be applicable.
- 1.6 After the 50th year, this Limited Warranty on the aluminum extruded profile(s) will expire and shall no longer be applicable.
- 1.7 Mayne Inc. replacement of the defective Product or reimbursement of this Limited Warranty is the exclusive remedy for the Covered Person for any defect in materials or workmanship. Mayne Inc. will not refund or pay any costs in connection with labor or accessory materials.



Clause 2.0
Alluminate Ultra Finish

- 2.1 During the first twenty (20) years of this warranty:
- 2.2 Checking/Cracking: No visible checking or cracking of the Alluminate Ultra Finish on the building.
- 2.3 Chalking Resistance: No chalking of the Alluminate Ultra Finish on the building in excess of that represented by No.8 rating based on ASTM D4214.
- 2.4 Color Retention: No color change of the Alluminate Ultra Finish on the building greater than 5 (five) CIE Lab ΔE units calculated in accordance with ASTM 2244 Section 6.3. Color change shall be measured on the exposed paint surface which has been cleaned of oil, grease, chalk, oxidized film or other contaminants, corresponding values shall be measured on the control panel.
- 2.5 Gloss Retention: Coated surface will exhibit gloss retention of a minimum of 30% of the original. Gloss retention shall be measured on the exposed paint surface which has been cleaned of oil, grease, chalk, oxidized film or other contaminants, corresponding values shall be measured on the control panel.
- 2.6 Adhesion: Adhesion of Alluminate Ultra Finish when initially applied to test panels and measured by reference to AAMA 2604-02 Clause 7.4.2 will show no removal of the film.

Clause 3.0

3.1 Warranty Terms and Conditions:

3.2 The "Warranty Period" for the warranties in Clause 1 shall mean fifty (50) years or for as long as the original "owner" and/or "purchaser" named above shall live and own the property on which the material was originally installed.

3.3 Clause 3: Shall mean fifteen (20) years, commencing on the date of completion.

3.4 Registration of the product is required for the warranty to be in effect. This warranty is valid for the original purchaser and one other owner of the structure where the product(s) have been installed.

3.7 Normal atmospheric conditions exclude corrosive or aggressive atmospheres such as those contaminated with chemical fumes or other corrosive elements. The Aluminate Ultra finish is not meant for marine use on boats, ships or offshore platforms.

Clause 4.0

4.1 This warranty will not extend or cover:

4.2 Damages to the coated metal caused by handling, shipping, processing and/or installation; or

4.3 Damages to the coated metal caused by scratching or abrading after installation; or

4.4 Damages to the coated metal as a result of standing water in horizontal installations.

Clause 4.0 continued

- 4.5 The warranty will not be applicable to damage or failure, which is caused by acts of God, falling objects, external forces, explosions, fire, riots, civil commotion's, acts of war, or other such similar or dissimilar occurrences beyond Mayne Inc.'s control.
- 4.6 Customer shall make available to Mayne Inc. the dates of the installation of the coated metal, the maintenance records including details of washing and cleaning procedures in compliance with the annual cleaning requirements as stated in the Required Maintenance section of this warranty. Customers shall demonstrate that the failure of the coated metal was due to a breach of the warranty stated herein.
- 4.7 Claims must be made in writing to Mayne Inc. within 30 days of the discovery of a problem and authorization obtained prior to beginning any repair and/or refinishing work. The claimant must provide proof of coverage. Claims can be made by writing to Mayne Inc. at the Product Performance Department. After receiving such notice, Mayne Inc. must be given a reasonable opportunity to inspect and verify the claim.
- 4.8 Mayne Inc. exclusive liability under this warranty, or otherwise, will be limited to refinishing and/or repairing, at Mayne Inc.'s sole discretion, the defective powder coating. The warranty on any refinished, repaired or replaced coated metal supplied hereunder shall be for the remainder of the warranty period applicable to the originally coated metal. All warranty work will be performed by a company or contractor selected by Mayne Inc. Color variance between refinished and/or repainted product and original shall not be indicative of a defect.

Clause 4.0 continued

- 4.9 This warranty represents the entire agreement between parties in relation to its subject matter and supersedes any previous agreement whether written or oral between the parties in relation to its subject matter. The limited warranties state the entire liability of Mayne Inc. with respect to the products covered by them. Mayne Inc. Shall have no liability for any incidental or consequential damages. No person is authorized to make any representation or warranty on behalf of Mayne Inc. except as expressly set forth above, and any such statement shall not be binding on Mayne Inc. Except as expressly set forth above, Mayne Inc makes no warranty of any kind, express or implied, including, without limitation, any implied warranty of merchantability or fitness for a particular purpose. Warranties shall be the duration of the limited warranty or such shorter duration as provided under applicable local law. These limited warranties give you specific legal rights, and you may also have other rights which vary from area to area.
- 4.91 Nothing in this warranty shall be construed as a warranty of the workmanship of any installer or as imposing on Mayne Inc. any liability for unsatisfactory performance caused by faulty workmanship in installation.
- 4.92 It's agreed all parties involved that all claims and disputes relating to this agreement that cannot be settled through negotiation will try in good faith to first settle the dispute by mediation administered by the American Arbitration Association (Construction Industry Mediation Procedures) as a prelude to mandatory binding arbitration. Such binding arbitration is to be conducted and administered by the Construction Industry Arbitration Rules of the American Arbitration Association. Both seller and purchaser agree to share equally in the costs of both mediation and arbitration and that such binding arbitration will be the sole and final remedial action.
- 4.93 **Required Maintenance.** On an annual basis use a soft sponge or cloth, water and mild detergent, non-abrasive soap with the pH range of 5-9 to clean the powder coated area of dirt, grim and other debris. Pressure washing and the use of harsh detergents or chemicals is not recommended. Include in your maintenance records the following: date, time, specific products used, name of maintenance person and their designation, maintenance company name and general condition of the powder coated finish.

Distributed by:



p: 1-866-716-2436

e: info@facadespec.comw: facadespecialtiesinc.com

10 of 10