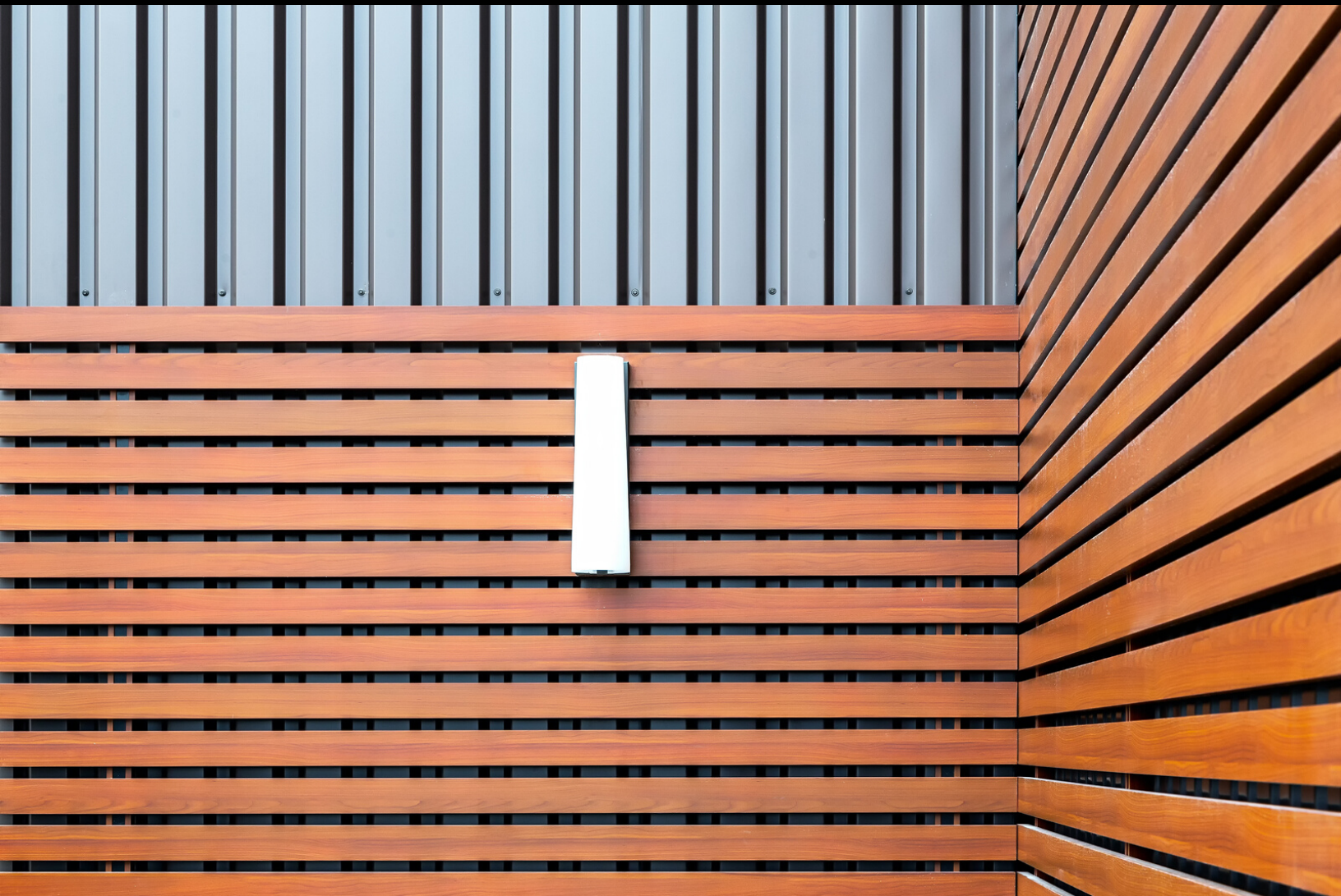


SIDING

Privacy Beams



O P E N - C H A N N E L G R I D S Y S T E M



LONGBOARD®
INSPIRING FACADES

Distributed by:



p: 1-866-716-2436

e: info@facadespec.com

w: facadespecialtiesinc.com

OPEN-CHANNEL GRID SIDING SYSTEM

INSTALLATION GUIDELINES

INSTALLATION GUIDELINES INTRODUCTION

NOTE: This manual must be read in conjunction with project drawings and specifications, applicable building codes, and relevant compliance documents. The details in this manual provide guidance on how to comply with Longboard®'s installation requirements and need to be reviewed by all parties who are responsible for installing Longboard® products on a project. This manual is subject to periodic re-examination and revision. For information on the current status of these documents please check the Longboard® website, www.longboardproducts.com. The reader is responsible for ensuring that they are using the most up-to-date information.

BEST PRACTICES:

Use appropriate PPE (personal protective equipment). The cutting of metal increases the risk of eye injury and hearing loss.

USE EYE AND HEARING PROTECTION.

Plan your install for best yield/finish appearance. With Longboard® woodgrains, understand the repeating pattern to ensure a satisfactory install. Do not install over pressure treated material without adequate barrier protection.

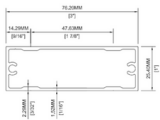


UPON DELIVERY: CHECK THE DELIVERY IS COMPLETE AND ALL MATERIALS HAVE ARRIVED IN GOOD CONDITION. INSPECT PRODUCT PRIOR TO INSTALLATION. LONGBOARD® IS NOT RESPONSIBLE FOR THE INSTALLATION OF BLEMISHED OR DAMAGED PRODUCT.

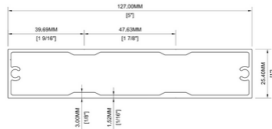
TO AVOID FINGERPRINTS AND DAMAGES, ALWAYS WEAR (WHITE) COTTON GLOVES WHEN HANDLING THE PANELS.



Profiles

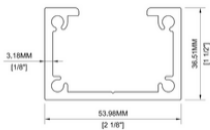


1X3"

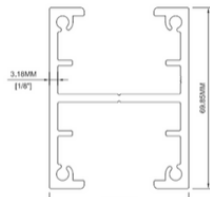


1X5"

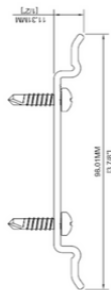
Components



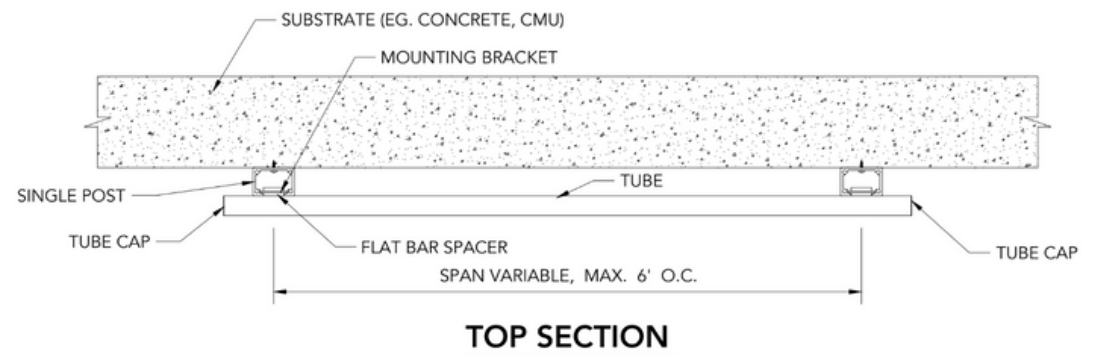
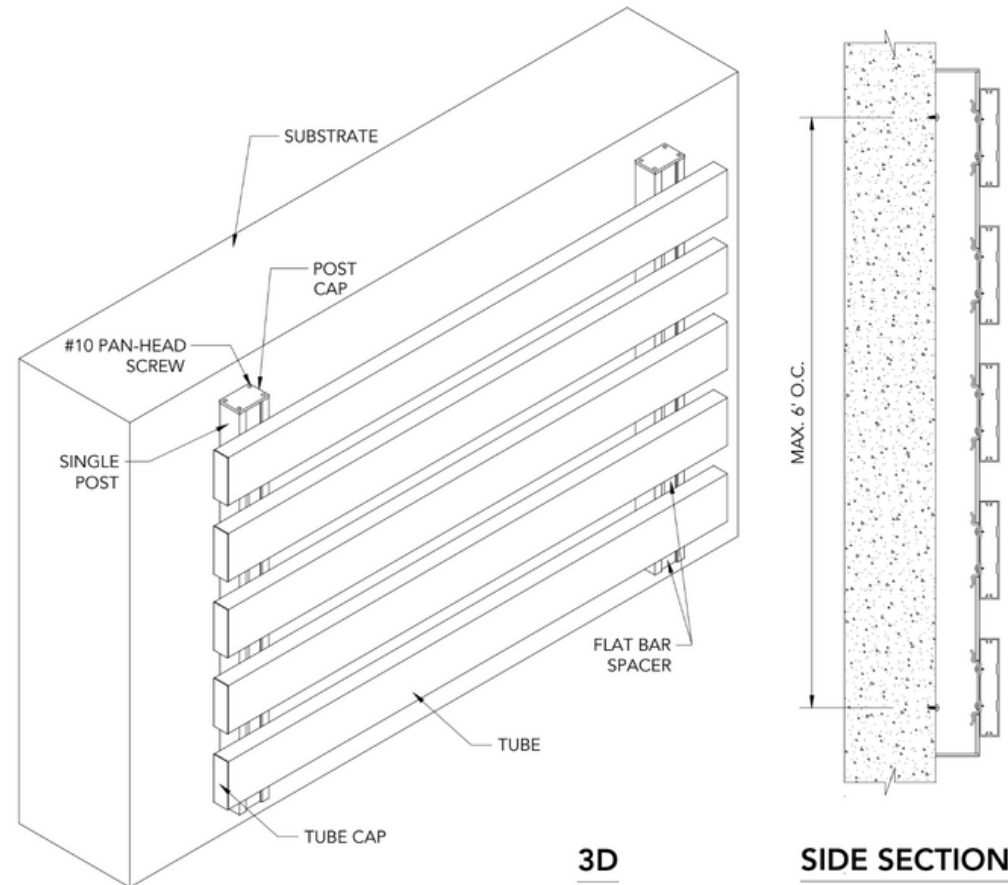
Single Post



Double Post



Mounting Bracket



Physical data

- Substrate: Aluminum
- Light reflectance value (LRV) coefficient:
 - Varies with finish
 - Dark wood grain LRV = 8.16
- UV Resistance: AAMA 2604 & 2605

BIM

- REVIT files available, see website for details.

Fire Classification

- Link & Lock battens are non-combustible according to ASTM E136 standards.

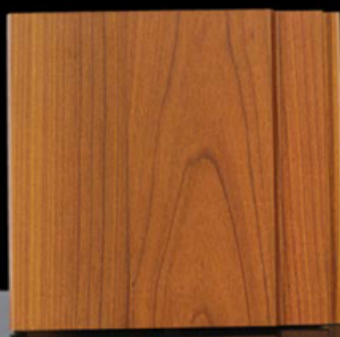
LEED v4 Credits

- EQ: Low-Emitting Materials
- EQ: Indoor Air Quality Assessment
- ID: Biophilic Design





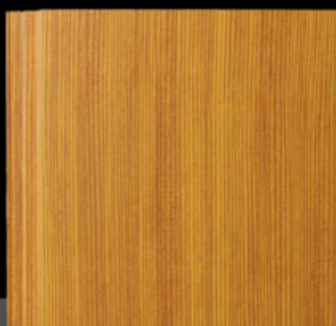
Light Cherry



Dark Cherry



Western Cedar



Light Fir



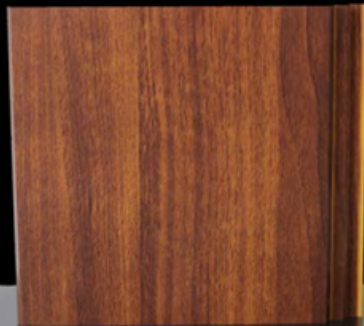
Dark Fir



Dark Walnut



Light National Walnut

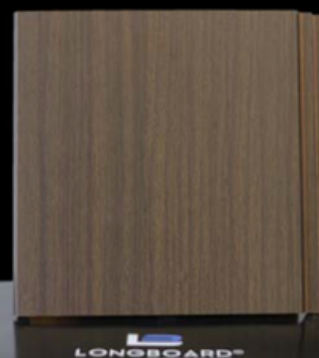


Dark National Walnut



Table Walnut

Most Popular Woodgrains



Italian Rosewood



LONGBOARD®
INSPIRING FACADES



LONGBOARD®
INSPIRING FACADES

Weathered Grey (Interior Only)



LONGBOARD®
INSPIRING FACADES

Sand Drift (Interior Only)



LONGBOARD®
INSPIRING FACADES

Light Oak



LONGBOARD®
INSPIRING FACADES

Dark Knotty Pine



LONGBOARD®
INSPIRING FACADES

Dark Antique Oak



LONGBOARD®
INSPIRING FACADES

Dark Acacia



LONGBOARD®
INSPIRING FACADES

Light Bamboo



LONGBOARD®
INSPIRING FACADES

Dark Bamboo



LONGBOARD®
INSPIRING FACADES

White Oak

Additional Woodgrains



LONGBOARD®
INSPIRING FACADES

Birchwood



LONGBOARD®

INSPIRING FACADES



Black

Brick Red

Medium Blue



Dark Brown

Classic Bronze

Slate Grey



Ultra White

C. Charcoal

Charcoal

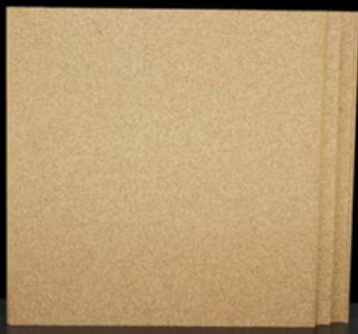
Standard Solid Colours



Bone White



LONGBOARD®
INSPIRING FACADES



Biscotti



Canyon Vista



Burnt Sienna



Venus



Platinum Ice



Moonstone

Specialty Finishes

**** NEW ****



LONGBOARD®
INSPIRING FACADES



Anodic Ice



Copper Penny



Old Navy



Ceramic Clay

PART 1 **GENERAL**

1.1 **RELATED SECTIONS**

- .1 Section 05 40 00 – Cold-Formed Metal framing: Metal framing for support of aluminum soffits.
- .2 Section 01 74 21 – Construction/Demolition Waste Management and Disposal.
- .3 Section 06 10 00 - Rough Carpentry.
- .4 Section 07 62 00 – Sheet Metal Flashing and Trim.
- .5 Section 07 92 00 - Joint Sealants.

1.2 **REFERENCES**

- .1 American Society for Testing and Materials (ASTM)
 - .1 ASTM E 84 Standard Test Method for Surface Burning Characteristics of Building Materials
 - .2 ASTM D 958 - Practice for Determining Temperatures of Standard ASTM Molds for Test Specimens of Plastics.
 - .3 ASTM E2768-11 – Standard Test Method for Extended Duration Surface Burning Characteristics for Building Materials (30 min Tunnel Test). Results: Zero Flame Spread, Smoke Developed Index of 5. Meets criteria for Class A fire rating
 - .4 ASTM E136 - Standard Test Method for Behavior of Materials in a Vertical Tube Furnace at 750°C
- .2 Canadian General Standards Board (CGSB)
 - .1 CAN/CGSB-51.32, Sheathing, Membrane, Breather Type.
 - .2 CAN/CGSB-93.2, Prefinished Aluminum Siding, Soffits and Fascia, for Residential Use.
 - .3 CAN/CGSB-93.3, Prefinished Galvanized and Aluminum-Zinc Alloy Steel Sheet for Residential Use.
 - .4 CAN/CGSB-93.4, Galvanized and Aluminum-Zinc Alloy Coated Steel Siding Soffits and Fascia, Prefinished, Residential.
 - .5 CGSB 93.5, Installation of Metal Residential Siding, Soffits and Fascia.
 - .6 CAN/ULC S114, Standard method of test for determination of non-combustibility in building materials.

SECTION 07 46 16
OPEN-CHANNEL GRID SIDING
LONGBOARD® ALUMINUM SIDING

- .3 American Architectural Manufacturers Association (AAMA)
 - .1 AAMA 2606-05 Voluntary Specification, Performance requirements and Test Procedures for Superior Performing Organic Coatings on Aluminum Extrusions and Panels.
 - .2 AAMA 2604 - Voluntary Specification, Performance requirements and Test Procedures for High Performing Organic Coatings on Aluminum Extrusions and Panels.
 - .3 AAMA 2603 - Voluntary Specification, Performance requirements and Test Procedures for Pigmented Organic Coatings on Aluminum Extrusions and Panels.

1.3 SUBMITTALS

- .1 Product data: submit manufacturer's printed product literature, specifications and data sheet.
- .2 Submit duplicate 1 X 3 X 6 inch Beams (25.4mm X 76.2mm X 152.4mm) samples of siding material, of colour and profile specified.
- .3 Shop drawings to indicate dimensions, profiles, attachment methods, schedule of wall elevations, trim and closure pieces, soffits, fascia, metal furring, and related work.
- .4 Certifications: Manufacturer's certifications that products comply with specified requirements, including laboratory reports showing compliance with specified tests and standards.
- .5 LEED Submittal Data: Manufacturer's product data for each product specified in this section per ecoscorecard.com.
- .6 Submit manufacturer's installation instructions.

1.4 LEED

- .1 Category - Material & Resources
 - .1 MR Credit 2.1, 2.2 - Construction Waste Management Divert 50% or 75% from disposal
- .2 Category – Indoor Environment Quality
 - .1 EQ Credit 4.1 to 4.6 – Low Emitting Materials
- .3 Category – Innovation and Design Process
 - .1 ID Credit – Biophilic Design

1.5 WARRANTY

- .1 Provide a written guarantee, signed and issued in the name of the owner, covering the metal cladding/siding material for 15 (fifteen) years from the date of Substantial Completion.
- .2 The manufacturer's warranty is limited to replacement of defective material only, rather than installation of the same. Faulty installation shall be corrected by the installing contractor. The warranty required herein is the sole remedy against the manufacturer and there are no other implied warranties. In any event, the manufacturer shall not be liable for incidentals or consequential damages.

PART 2 PRODUCTS

2.1 ALUMINUM CLADDING AND COMPONENTS

- .1 1 X 3 Beams (25.4mm X 76.2mm) extruded aluminum 6063 T5
 - .1 Finish coating: powder coated finish
 - .2 Colour: colour selected by Owner's Representative.
 - .3 Gloss: 30 ± 5.
 - .4 Thickness: 2.5mm base metal thickness.
 - .5 Profile: 1 X 3 inch (25.4mm X 76.2mm) 24 ft (7315.2mm) rectangular beam
- .2 1 X 5 Beams (25.4mm X 127mm) extruded aluminum 6063 T5
 - .1 Finish coating: powder coated finish
 - .2 Colour: colour selected by Owner's Representative.
 - .3 Gloss: 30 ± 5.
 - .4 Thickness: 2.5 mm base metal thickness.
 - .5 Profile: 1 X 5 inch (25.4mm X 127mm) 24 ft (7315.2mm) rectangular beam

2.2 ACCESSORIES

- .1 Single Posts, Double Posts, mounting brackets, plastic spacers, flat bar spacers, beam caps, post caps.

2.3 MANUFACTURERS

- .1 Mayne Inc. 27575 50Ave Langley, BC Canada V3A 0A2 em. info@longboardproducts.com
ph. 1.800.604.0343

SECTION 07 46 16
OPEN-CHANNEL GRID SIDING
LONGBOARD® ALUMINUM SIDING

PART 3 **EXECUTION**

3.1 **INSTALLATION**

- .1 Install cladding in accordance with CGSB 93.5, and manufacturer's written instructions
- .2 Install wide starter strips, inside and outside corners, edgings, soffit, drip, cap, sill and window/door opening flashings as required.
- .3 Install outside corners, fillers and closure strips with carefully formed and profiled work.
- .4 Install soffit and fascia cladding as indicated.
- .5 Maintain joints in exterior cladding, true to line, tight fitting, hairline joints.
- .6 Attach components in manner not restricting thermal movement.

3.2 **CLEANING**

- .1 Upon completion of installation, remove surplus materials, rubbish, tools and equipment barriers.

END OF SECTION



Mayne Inc. #120 – 1777 Clearbrook Rd Abbotsford, BC Canada V2T 5X5
Mayne Inc. the Manufacturers of Longboard® Products
Office: 1.800.604.0343
Email: info@longboardproducts.com
Web: longboardproducts.com

15 Year Powder Coating Finish Limited Warranty for Longboard Products
50 Year Extruded Aluminum Profiles Limited Warranty for Longboard Products

warrants to;

Please input company name that's registering the warranty

that any Longboard products as identified by the Product Codes listed below, Longboard products will conform to the standards set out in Clause 1 and Clause 2 of this Warranty, subject to the terms and conditions set out in Clause 3 and 4 of this Warranty.



| Product Codes | Description |
|---------------|-------------|
| | |
| | |
| | |

Print Name of Contractor or Owner:

Project Name:

Property Address:

Substantial Date of Completion:

Description of Product on jobsite:



I have read and agree to the terms of the Mayne Inc.'s Longboard Product 15 year powder coated surface and 50 year aluminum extruded profile(s) warranty and acknowledge receipt of a copy of the Warranty Certificate.

(Name of Owner/Contractor)

(Signature)

(Date)

Duly authorized for on behalf of Mayne Inc.

(Name and Designation)

(Signature)

(Date)



Clause 1.0

Extruded Aluminum Profile(s)

Mayne Inc. expressly warrants that its product line is free from manufacturing defects in material or workmanship.

- 1.1 When siding is applied according to Longboard instructions and properly maintained, such product is guaranteed against the following:
- 1.2 Buckling: The product itself will be free of any buckling that is not associated with the substrate and/or structure to which the Longboard system is attached. For the purpose of this warranty, buckling shall be defined as warping of the product(s) exceeding one sixteenth of an inch out of plane per linear foot.
- 1.3 Corrosion: When applied according to Mayne Inc. instructions and properly maintained, such product is further guaranteed against rusting and corroding. Subject to the limitations set out in Clause 3 and 4.
- 1.4 What we will do: If, during the fifteenth (15th) year Limited Warranty Period on the powder coating finish, the Product is defective in material or workmanship, Mayne Inc. will, in its sole discretion, either repair or replace the defective portion of the Product.
- 1.5 What we will do: If, during the 50-year Limited Warranty Period on the aluminum extruded profiles, the Product is defective in material or workmanship, Mayne Inc. will, in its sole discretion, either repair or replace the defective portion of the Product.

Clause 1.0 continued
Extruded Aluminum Profile(s)

Mayne Inc. expressly warrants that its product line is free from manufacturing defects in material or workmanship continued:

- 1.5 After the 15th year, this Limited Warranty on the powder coated finish will expire and shall no longer be applicable.
- 1.6 After the 50th year, this Limited Warranty on the aluminum extruded profile(s) will expire and shall no longer be applicable.
- 1.7 Mayne Inc. replacement of the defective Product or reimbursement of this Limited Warranty is the exclusive remedy for the Covered Person for any defect in materials or workmanship. Mayne Inc. will not refund or pay any costs in connection with labor or accessory materials.

Clause 2.0

Alluminate Ultra Finish

- 2.1 During the first fifteen (15) years of this warranty:
- 2.2 Checking/Cracking: No visible checking or cracking of the Alluminate Ultra Finish on the building.
- 2.3 Chalking Resistance: No chalking of the Alluminate Ultra Finish on the building in excess of that represented by No.6 rating based on ASTM D4214.
- 2.4 Color Retention: No color change of the Alluminate Ultra Finish on the building greater than 5 (five) CIE Lab ΔE units calculated in accordance with ASTM 2244 Section 6.3. Color change shall be measured on the exposed paint surface which has been cleaned of oil, grease, chalk, oxidized film or other contaminants, corresponding values shall be measured on the control panel.
- 2.5 Gloss Retention: Coated surface will exhibit gloss retention of a minimum of 30% of the original. Gloss retention shall be measured on the exposed paint surface which has been cleaned of oil, grease, chalk, oxidized film or other contaminants, corresponding values shall be measured on the control panel.
- 2.6 Adhesion: Adhesion of Alluminate Ultra Finish when initially applied to test panels and measured by reference to AAMA 2604-02 Clause 7.4.2 will show no removal of the film.

Clause 3.0

3.1 Warranty Terms and Conditions:

3.2 The “Warranty Period” for the warranties in Clause 1 shall mean fifty (50) years or for as long as the original “owner” and/or “purchaser” named above shall live and own the property on which the material was originally installed.

3.3 Clause 3: Shall mean fifteen (15) years, commencing on the date of completion.

3.4 Registration of the product is required for the warranty to be in effect. This warranty is valid for the original purchaser and one other owner of the structure where the product(s) have been installed.

3.7 Normal atmospheric conditions exclude corrosive or aggressive atmospheres such as those contaminated with chemical fumes or other corrosive elements. The Aluminate Ultra finish is not meant for marine use on boats, ships or offshore platforms.

Clause 4.0

4.1 This warranty will not extend or cover:

4.2 Damages to the coated metal caused by handling, shipping, processing and/or installation; or

4.3 Damages to the coated metal caused by scratching or abrading after installation; or

4.4 Damages to the coated metal as a result of standing water in horizontal installations.

Clause 4.0 continued

- 4.5 The warranty will not be applicable to damage or failure, which is caused by acts of God, falling objects, external forces, explosions, fire, riots, civil commotion's, acts of war, or other such similar or dissimilar occurrences beyond Mayne Inc.'s control.
- 4.6 Customer shall make available to Mayne Inc. the dates of the installation of the coated metal, the maintenance records including details of washing and cleaning procedures in compliance with the annual cleaning requirements as stated in the Required Maintenance section of this warranty. Customers shall demonstrate that the failure of the coated metal was due to a breach of the warranty stated herein.
- 4.7 Claims must be made in writing to Mayne Inc. within 30 days of the discovery of a problem and authorization obtained prior to beginning any repair and/or refinishing work. The claimant must provide proof of coverage. Claims can be made by writing to Mayne Inc. at the Product Performance Department. After receiving such notice, Mayne Inc. must be given a reasonable opportunity to inspect and verify the claim.
- 4.8 Mayne Inc. exclusive liability under this warranty, or otherwise, will be limited to refinishing and/or repairing, at Mayne Inc.'s sole discretion, the defective powder coating. The warranty on any refinished, repaired or replaced coated metal supplied hereunder shall be for the remainder of the warranty period applicable to the originally coated metal. All warranty work will be performed by a company or contractor selected by Mayne Inc. Color variance between refinished and/or repainted product and original shall not be indicative of a defect.

Clause 4.0 continued

- 4.9 This warranty represents the entire agreement between parties in relation to its subject matter and supersedes any previous agreement whether written or oral between the parties in relation to its subject matter. The limited warranties state the entire liability of Mayne Inc. with respect to the products covered by them. Mayne Inc. Shall have no liability for any incidental or consequential damages. No person is authorized to make any representation or warranty on behalf of Mayne Inc. except as expressly set forth above, and any such statement shall not be binding on Mayne Inc. Except as expressly set forth above, Mayne Inc makes no warranty of any kind, express or implied, including, without limitation, any implied warranty of merchantability or fitness for a particular purpose. Warranties shall be the duration of the limited warranty or such shorter duration as provided under applicable local law. These limited warranties give you specific legal rights, and you may also have other rights which vary from area to area.
- 4.91 Nothing in this warranty shall be construed as a warranty of the workmanship of any installer or as imposing on Mayne Inc. any liability for unsatisfactory performance caused by faulty workmanship in installation.
- 4.92 It's agreed all parties involved that all claims and disputes relating to this agreement that cannot be settled through negotiation will try in good faith to first settle the dispute by mediation administered by the American Arbitration Association (Construction Industry Mediation Procedures) as a prelude to mandatory binding arbitration. Such binding arbitration is to be conducted and administered by the Construction Industry Arbitration Rules of the American Arbitration Association. Both seller and purchaser agree to share equally in the costs of both mediation and arbitration and that such binding arbitration will be the sole and final remedial action.
- 4.93 Required Maintenance. On an annual basis use a soft sponge or cloth, water and mild detergent, non-abrasive soap with the pH range of 5-9 to clean the powder coated area of dirt, grim and other debris. Pressure washing and the use of harsh detergents or chemicals is not recommended. Include in your maintenance records the following: date, time, specific products used, name of maintenance person and their designation, maintenance company name and general condition of the powder coated finish.



Mayne Inc. #120 – 1777 Clearbrook Rd Abbotsford, BC Canada V2T 5X5
Mayne Inc. the Manufacturers of Longboard® Products
Office: 1.800.604.0343
Email: info@longboardproducts.com
Web: longboardproducts.com

20 Year Powder Coating Finish Limited Warranty for Longboard Products
50 Year Extruded Aluminum Profiles Limited Warranty for Longboard Products

warrants to;

Please input company name that's registering the warranty

that any Longboard products as identified by the Product Codes listed below, Longboard products will conform to the standards set out in Clause 1 and Clause 2 of this Warranty, subject to the terms and conditions set out in Clause 3 and 4 of this Warranty.



| Product Codes | Description |
|---------------|-------------|
| | |
| | |
| | |

Print Name of Contractor or Owner:

Project Name:

Property Address:

Substantial Date of Completion:

Description of Product on jobsite:



I have read and agree to the terms of the Mayne Inc.'s Longboard Product 20 year powder coated surface and 50 year aluminum extruded profile(s) warranty and acknowledge receipt of a copy of the Warranty Certificate.

(Name of Owner/Contractor)

(Signature)

(Date)

Duly authorized for on behalf of Mayne Inc.

(Name and Designation)

(Signature)

(Date)



Clause 1.0

Extruded Aluminum Profile(s)

Mayne Inc. expressly warrants that its product line is free from manufacturing defects in material or workmanship.

- 1.1 When siding is applied according to Longboard instructions and properly maintained, such product is guaranteed against the following:
- 1.2 Buckling: The product itself will be free of any buckling that is not associated with the substrate and/or structure to which the Longboard system is attached. For the purpose of this warranty, buckling shall be defined as warping of the product(s) exceeding one sixteenth of an inch out of plane per linear foot.
- 1.3 Corrosion: When applied according to Mayne Inc. instructions and properly maintained, such product is further guaranteed against rusting and corroding. Subject to the limitations set out in Clause 3 and 4.
- 1.4 What we will do: If, during the twenty (20) year Limited Warranty Period on the powder coating finish, the Product is defective in material or workmanship, Mayne Inc. will, in its sole discretion, either repair or replace the defective portion of the Product.
- 1.5 What we will do: If, during the 50-year Limited Warranty Period on the aluminum extruded profiles, the Product is defective in material or workmanship, Mayne Inc. will, in its sole discretion, either repair or replace the defective portion of the Product.

Clause 1.0 continued
Extruded Aluminum Profile(s)

Mayne Inc. expressly warrants that its product line is free from manufacturing defects in material or workmanship continued:

- 1.5 After the 20th year, this Limited Warranty on the powder coated finish will expire and shall no longer be applicable.
- 1.6 After the 50th year, this Limited Warranty on the aluminum extruded profile(s) will expire and shall no longer be applicable.
- 1.7 Mayne Inc. replacement of the defective Product or reimbursement of this Limited Warranty is the exclusive remedy for the Covered Person for any defect in materials or workmanship. Mayne Inc. will not refund or pay any costs in connection with labor or accessory materials.

Clause 2.0
Alluminate Ultra Finish

- 2.1 During the first twenty (20) years of this warranty:
- 2.2 Checking/Cracking: No visible checking or cracking of the Alluminate Ultra Finish on the building.
- 2.3 Chalking Resistance: No chalking of the Alluminate Ultra Finish on the building in excess of that represented by No.8 rating based on ASTM D4214.
- 2.4 Color Retention: No color change of the Alluminate Ultra Finish on the building greater than 5 (five) CIE Lab ΔE units calculated in accordance with ASTM 2244 Section 6.3. Color change shall be measured on the exposed paint surface which has been cleaned of oil, grease, chalk, oxidized film or other contaminants, corresponding values shall be measured on the control panel.
- 2.5 Gloss Retention: Coated surface will exhibit gloss retention of a minimum of 30% of the original. Gloss retention shall be measured on the exposed paint surface which has been cleaned of oil, grease, chalk, oxidized film or other contaminants, corresponding values shall be measured on the control panel.
- 2.6 Adhesion: Adhesion of Alluminate Ultra Finish when initially applied to test panels and measured by reference to AAMA 2604-02 Clause 7.4.2 will show no removal of the film.

Clause 3.0

3.1 Warranty Terms and Conditions:

3.2 The "Warranty Period" for the warranties in Clause 1 shall mean fifty (50) years or for as long as the original "owner" and/or "purchaser" named above shall live and own the property on which the material was originally installed.

3.3 Clause 3: Shall mean fifteen (20) years, commencing on the date of completion.

3.4 Registration of the product is required for the warranty to be in effect. This warranty is valid for the original purchaser and one other owner of the structure where the product(s) have been installed.

3.7 Normal atmospheric conditions exclude corrosive or aggressive atmospheres such as those contaminated with chemical fumes or other corrosive elements. The Aluminate Ultra finish is not meant for marine use on boats, ships or offshore platforms.

Clause 4.0

4.1 This warranty will not extend or cover:

4.2 Damages to the coated metal caused by handling, shipping, processing and/or installation; or

4.3 Damages to the coated metal caused by scratching or abrading after installation; or

4.4 Damages to the coated metal as a result of standing water in horizontal installations.

Clause 4.0 continued

- 4.5 The warranty will not be applicable to damage or failure, which is caused by acts of God, falling objects, external forces, explosions, fire, riots, civil commotion's, acts of war, or other such similar or dissimilar occurrences beyond Mayne Inc.'s control.
- 4.6 Customer shall make available to Mayne Inc. the dates of the installation of the coated metal, the maintenance records including details of washing and cleaning procedures in compliance with the annual cleaning requirements as stated in the Required Maintenance section of this warranty. Customers shall demonstrate that the failure of the coated metal was due to a breach of the warranty stated herein.
- 4.7 Claims must be made in writing to Mayne Inc. within 30 days of the discovery of a problem and authorization obtained prior to beginning any repair and/or refinishing work. The claimant must provide proof of coverage. Claims can be made by writing to Mayne Inc. at the Product Performance Department. After receiving such notice, Mayne Inc. must be given a reasonable opportunity to inspect and verify the claim.
- 4.8 Mayne Inc. exclusive liability under this warranty, or otherwise, will be limited to refinishing and/or repairing, at Mayne Inc.'s sole discretion, the defective powder coating. The warranty on any refinished, repaired or replaced coated metal supplied hereunder shall be for the remainder of the warranty period applicable to the originally coated metal. All warranty work will be performed by a company or contractor selected by Mayne Inc. Color variance between refinished and/or repainted product and original shall not be indicative of a defect.

Clause 4.0 continued

- 4.9 This warranty represents the entire agreement between parties in relation to its subject matter and supersedes any previous agreement whether written or oral between the parties in relation to its subject matter. The limited warranties state the entire liability of Mayne Inc. with respect to the products covered by them. Mayne Inc. Shall have no liability for any incidental or consequential damages. No person is authorized to make any representation or warranty on behalf of Mayne Inc. except as expressly set forth above, and any such statement shall not be binding on Mayne Inc. Except as expressly set forth above, Mayne Inc makes no warranty of any kind, express or implied, including, without limitation, any implied warranty of merchantability or fitness for a particular purpose. Warranties shall be the duration of the limited warranty or such shorter duration as provided under applicable local law. These limited warranties give you specific legal rights, and you may also have other rights which vary from area to area.
- 4.91 Nothing in this warranty shall be construed as a warranty of the workmanship of any installer or as imposing on Mayne Inc. any liability for unsatisfactory performance caused by faulty workmanship in installation.
- 4.92 It's agreed all parties involved that all claims and disputes relating to this agreement that cannot be settled through negotiation will try in good faith to first settle the dispute by mediation administered by the American Arbitration Association (Construction Industry Mediation Procedures) as a prelude to mandatory binding arbitration. Such binding arbitration is to be conducted and administered by the Construction Industry Arbitration Rules of the American Arbitration Association. Both seller and purchaser agree to share equally in the costs of both mediation and arbitration and that such binding arbitration will be the sole and final remedial action.
- 4.93 **Required Maintenance.** On an annual basis use a soft sponge or cloth, water and mild detergent, non-abrasive soap with the pH range of 5-9 to clean the powder coated area of dirt, grim and other debris. Pressure washing and the use of harsh detergents or chemicals is not recommended. Include in your maintenance records the following: date, time, specific products used, name of maintenance person and their designation, maintenance company name and general condition of the powder coated finish.

Distributed by:



p: 1-866-716-2436
e: info@facadespec.com
w: facadespecialtiesinc.com

