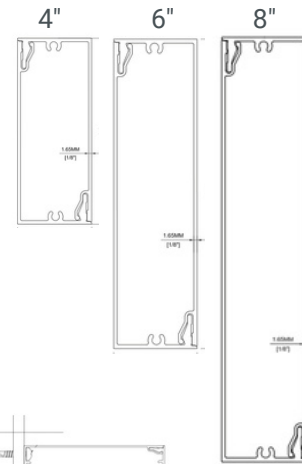


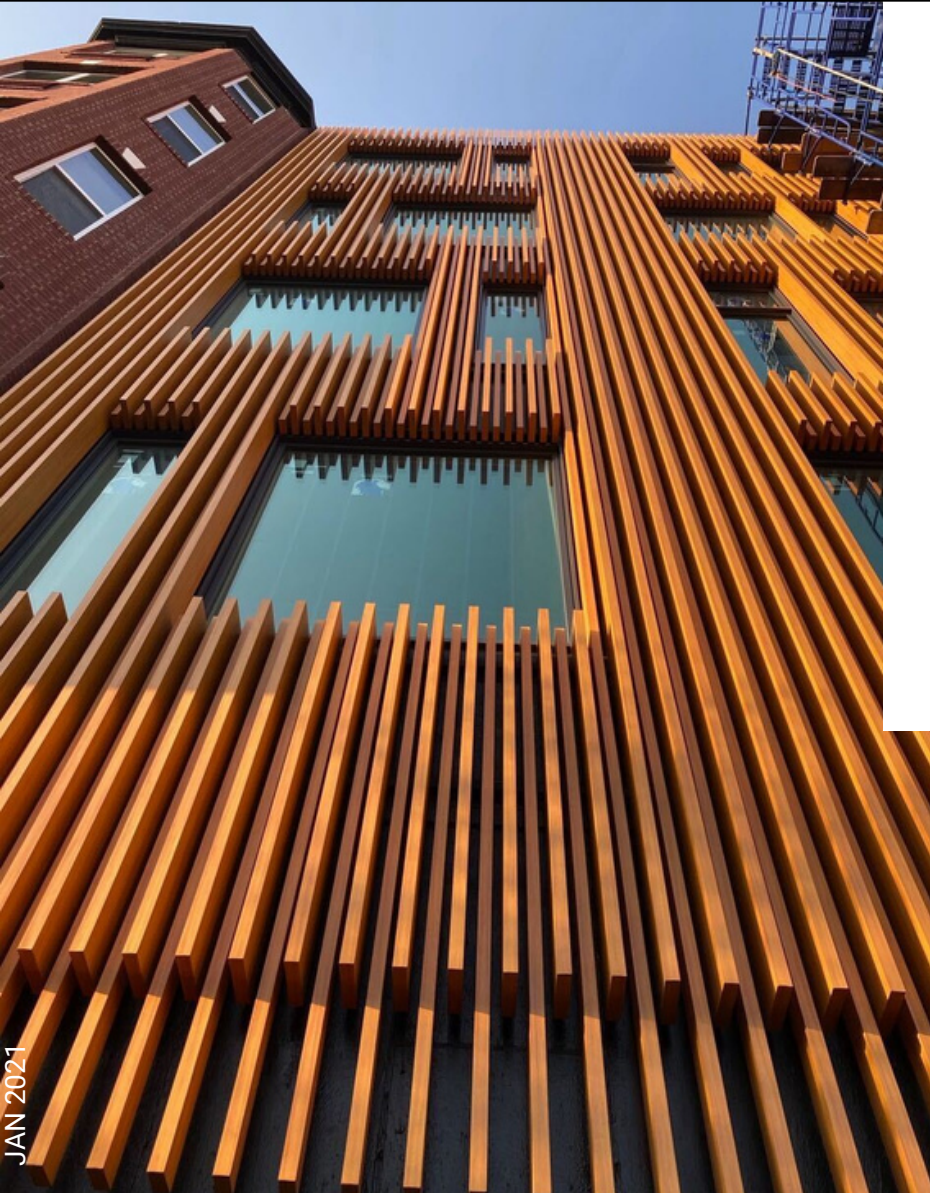
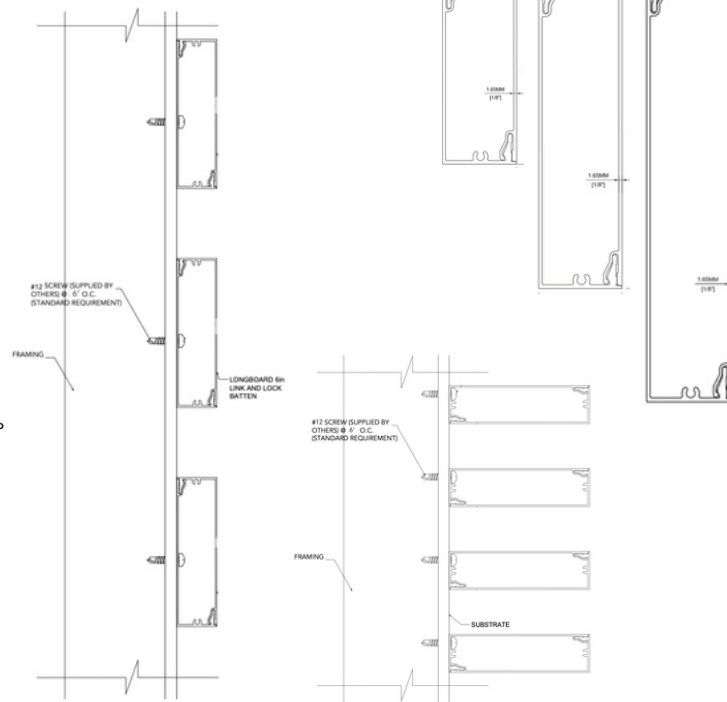
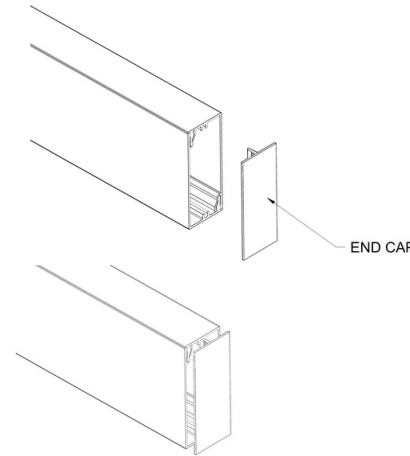
LINK & LOCK SIDING



TYPICAL SECTIONS



TYPICAL ISOMETRICS



JAN 2021

PROFILES

1-5/8" X 4", 1-5/8" X 6", 1-5/8" X 8"
Standard Lengths: 24'

COMPONENTS

End Caps

LEAD TIME

3-4 weeks (subject to change)

FINISHES

Woodgrains, Solid, Specialty
Custom Solid Colour Matching (Additional Lead Times Apply)

ATTACHMENT

predrill & hard fasten w. #12 screws* @ 6' o.c. (max.)

*screws are NOT included

△ see install guide for details

BIM & CAD

RVT & DWG files available, see website for details

PHYSICAL DATA

6063-T5 Extruded Aluminum
100% Recyclable
Warranty: Finish: 15 year (standard)/20 year* (ultra) (*10 week lead time); Aluminum: 50 year
Weight (lbs/lf): 1.3 (4"); 1.5 (6"); 1.9 (8")

TESTING

ICC-ES Evaluation Report - Division: 05 00 00 - METALS
• Section: 05 50 00 - Metal Fabrications

LARR - Los Angeles Department of Building Safety (LADBS) accepts ICC-ES reports as proof of compliance

Florida Product Code: FL20075

WUI (The Wildland-Urban Interface) – California Department of Forestry & Fire Protection Office of the State Fire Marshal Listing No. 8140-2286:0500

🔥 Fire Rating: Class A Non-Combustible by ASTM E136 & ASTM E84

☀️ Light Reflectance: 5% (Black) up to 73.2% (Ultra White)

info@facadespec.com

facadespec.com

1(866)716-2436