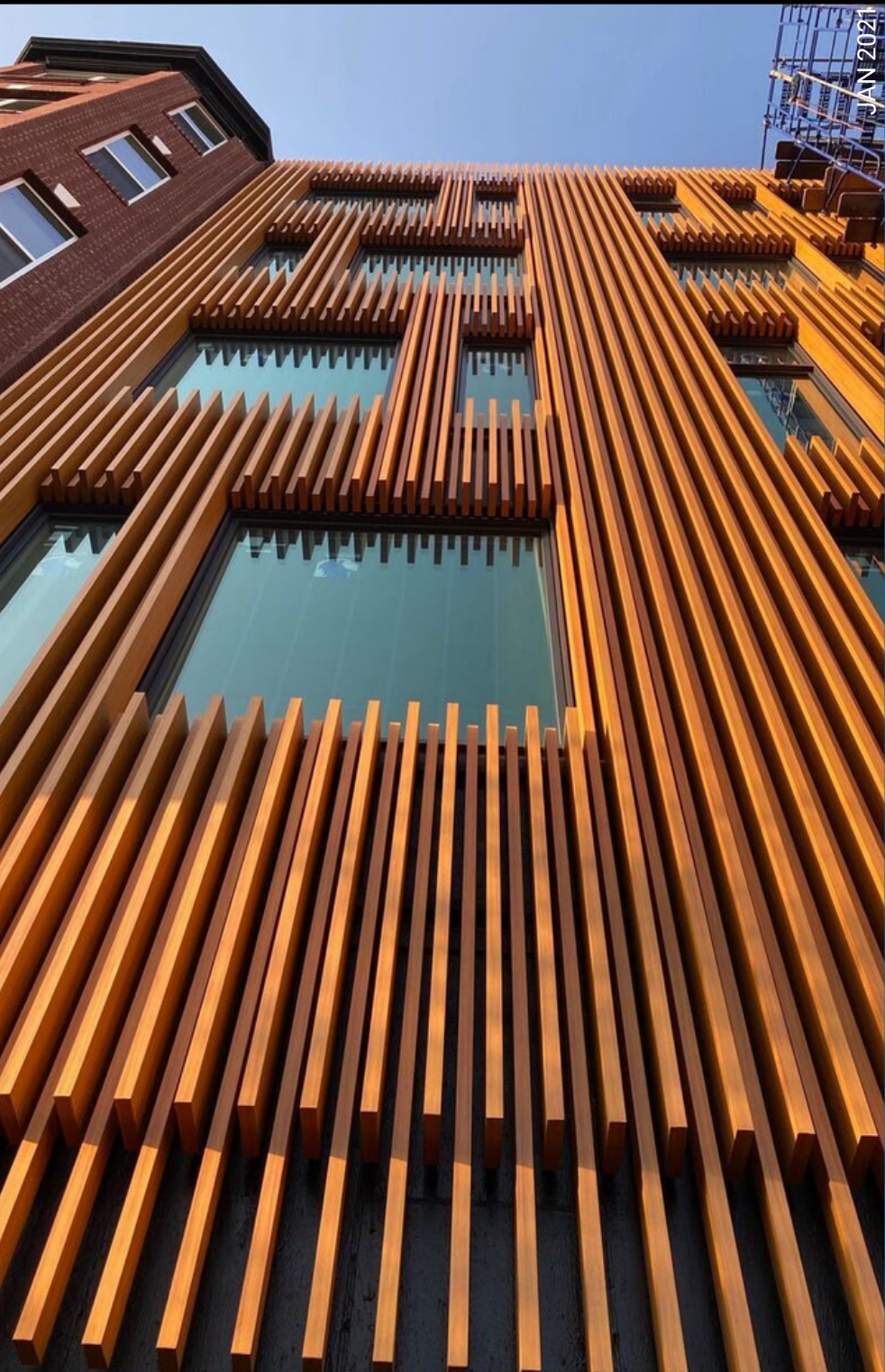


LINK & LOCK FINS/LOUVERS



PROFILES

1-5/8" X 4", 1-5/8" X 6", 1-5/8" X 8"
Standard Lengths: 24'

COMPONENTS

End Caps

FINISHES

Woodgrains, Solid, Specialty
Custom Solid Colour Matching
(Additional Lead Times Apply)

LEAD TIME

3-4 weeks (subject to change)

BIM & CAD

RVT & DWG files available,
see website for details

ATTACHMENT

predrill & hard fasten w. #12 screws* @ 6' o.c. (max.)

*screws are NOT included

△ see install guide for details

PHYSICAL DATA

6063-T5 Extruded Aluminum

100% Recyclable

Warranty:

Finish:

15 year (standard)

20 year* (ultra)

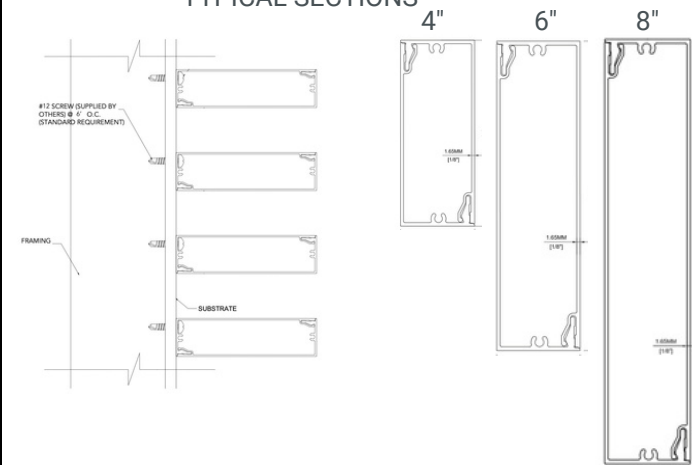
(*10 week lead time)

Aluminum: 50 year

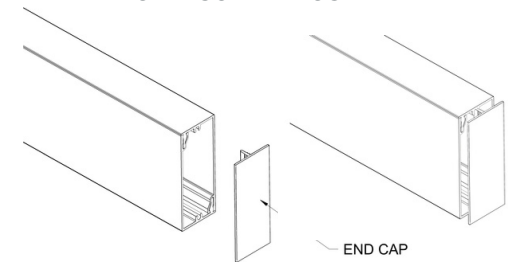
Weight - lbs/lf:

1.3 (4"); 1.5 (6"); 1.9 (8")

TYPICAL SECTIONS



TYPICAL ISOMETRICS



TESTING

ICC-ES Evaluation Report - Division: 05 00 00 - METALS
• Section: 05 50 00 - Metal Fabrications

LARR - Los Angeles Department of Building Safety (LADBS)
accepts ICC-ES reports as proof of compliance

Florida Product Code: FL20075

WUI (The Wildland-Urban Interface) – California Department of
Forestry & Fire Protection Office of the State Fire Marshal
Listing No. 8140-2286:0500

🔥 Fire Rating: Class A Non-Combustible by ASTM E136 &
ASTM E84

☀️ Light Reflectance: 5% (Black) up to 73.2% (Ultra White)