

DAUNTLESS



Align

PHYSICAL DATA

6063-T5 Extruded Aluminum

100% Recyclable

Warranty: Finish: 15 year (standard)/20 year* (ultra)

(*10 week lead time); Aluminum: 50 year

Weight (lbs/lf): 1.2 (4"); 1.6 (6")

Max. load per Hanger: 8.6kg (19lbs)


TESTING


ICC-ES Evaluation Report - Division: 09 00 00 - FINISHES


- Section: 09 54 00 - Specialty Ceilings
- Section 09 54 23 - Linear Metal Ceilings

LARR - Los Angeles Department of Building Safety (LADBS) accepts ICC-ES reports as proof of compliance

WUI (The Wildland-Urban Interface) - California Department of Forestry & Fire Protection Office of the State Fire Marshal Listing No. 8140-2286:0500

 Fire Rating: Class A Non-Combustible by ASTM E136 & ASTM E84

 Acoustical Rating with insulation: NRC up to 0.79

 Light reflectance (LRV): Up to 73.2% (Ultra White)

PROFILES

1-5/8" X 4", 1-5/8" X 6" - Standard Lengths: 24'

COMPONENTS

Carrier Track - Standard Lengths: 24'

Hanger Bracket, Beam End Cap, Beam Top Spline Connector - Units (1pc)

FINISHES

Woodgrains, Solid, Specialty

Custom Solid Colour Matching (Additional Lead Times Apply)

ATTACHMENT

Carrier Track spacings to be calculated by design team to suit layout and project requirements, suspended from structure above (by others) *refer to submittal package for load calculation data

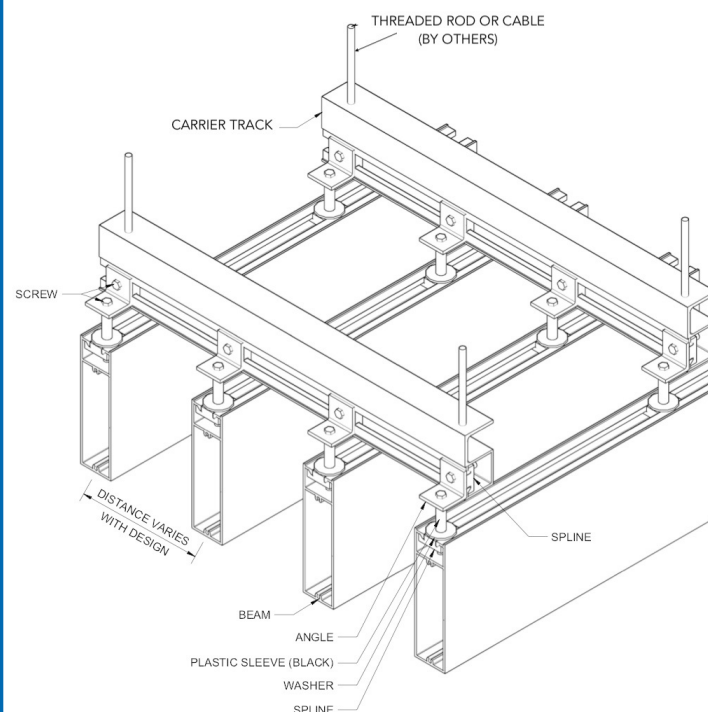
BIM & CAD

RVT & DWG files available, see website for details

LEAD TIME

3-4 weeks (subject to change)

TYPICAL ISOMETRIC



TYPICAL SECTIONS

